

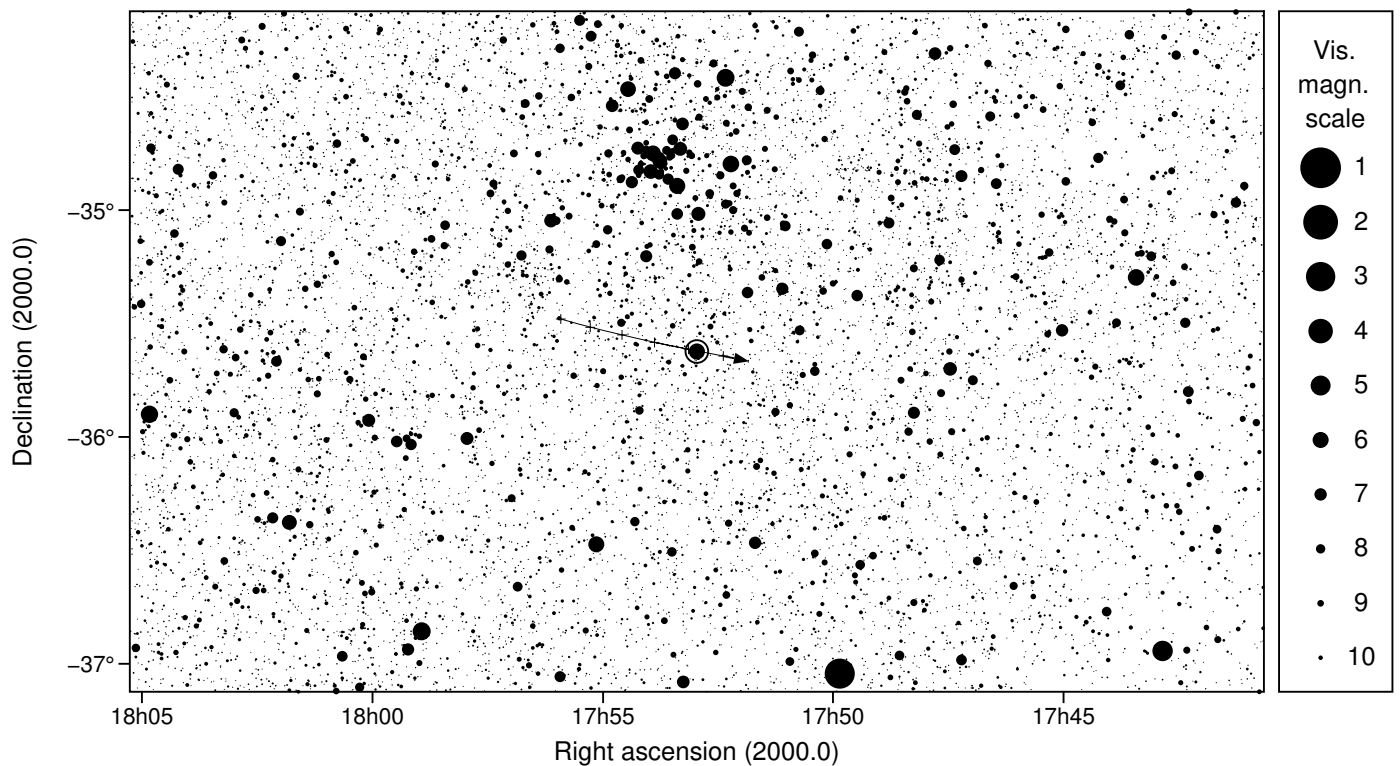
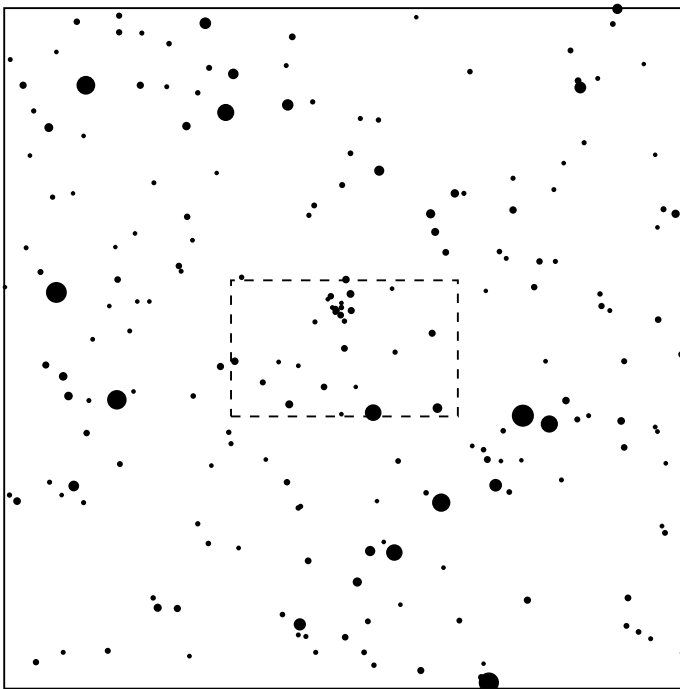
78 Diana & HIP 87532

2025 may 17 5^h56.0^m U.T.

Planet: $a = 2.62, e = 0.20$
 V. mag. = 12.68 Diam. = 116.0 km = 0.08"
 $\mu = 23.40''/h$ $\pi = 4.38''$ Ref. = EG2023

Star: Source cat. DR3
 $\alpha = 17^h52^m57.619^s$ $\delta = -35^\circ37'28.88''$
 Vmag = 5.95 Bmag = 6.11

$\Delta m = 6.7$ Max. dur. = 12.2s Sun : 145° Moon : 20° , 81%



78 Diana & HIP 87532

2025 may 17 5^h56.0^m U.T.

