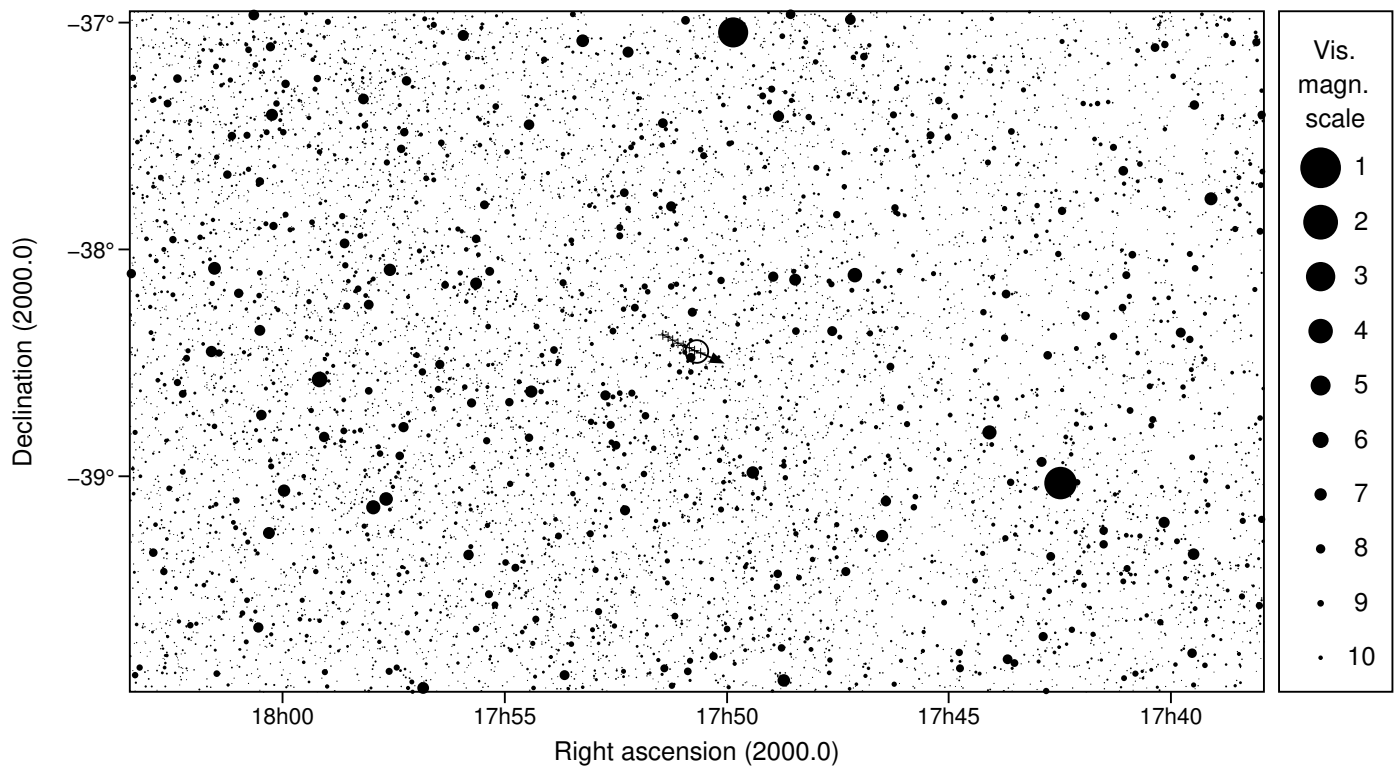
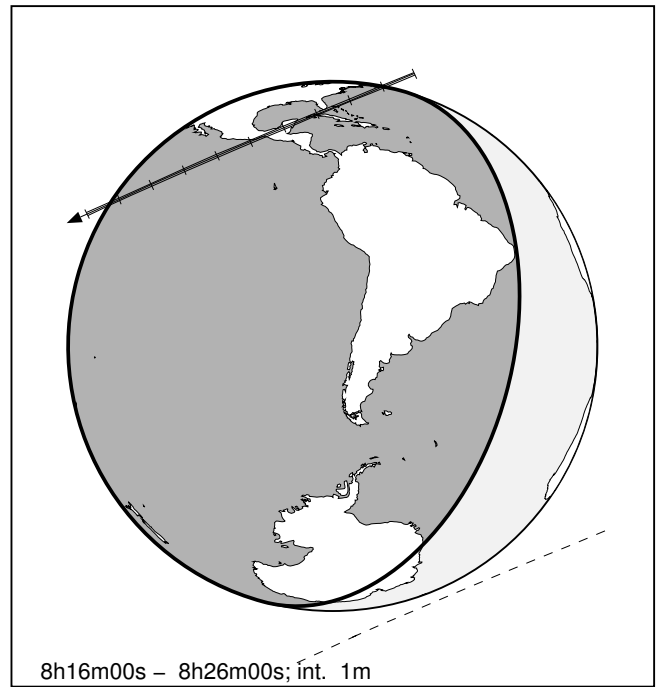
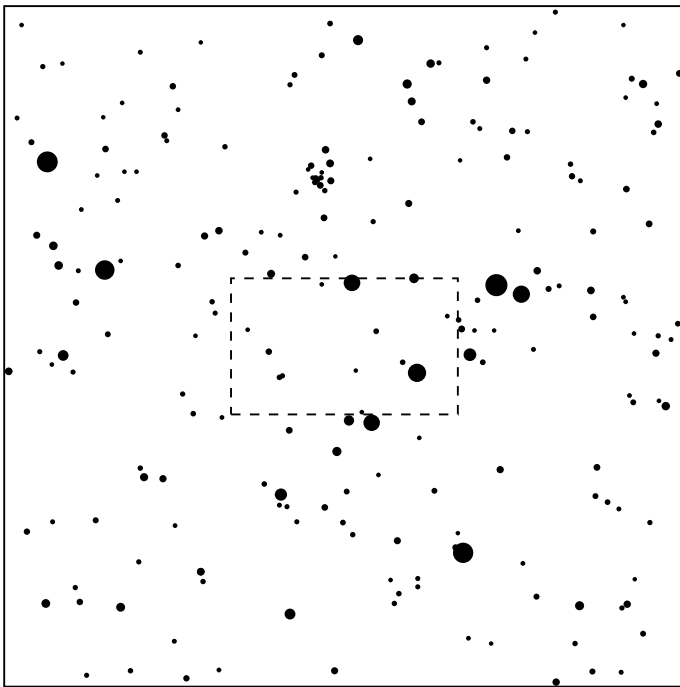


2010EU65 & TYC 7886-01469-1

2025 may 3 8^h21.1^m U.T.

Planet: a = 20.02, e = 0.15
 V. mag. = 21.63 Diam. = 63.1 km = 0.01"
 μ = 4.25"/h π = 0.53" Ref. = MPO562242
 Δm = 10.7 Max. dur. = 4.5s

Star: Source cat. DR3
 α = 17^h50^m40.600^s δ = -38°27'00.92"
 Vmag = 10.95 Bmag = 11.33
 Sun : 132° Moon : 149° , 37%



2010EU65 & TYC 7886-01469-1

2025 may 3 8^h21.1^m U.T.



8h16m00s – 8h26m00s; int. 1m