

# 893 Leopoldina & TYC 5080-01162-1

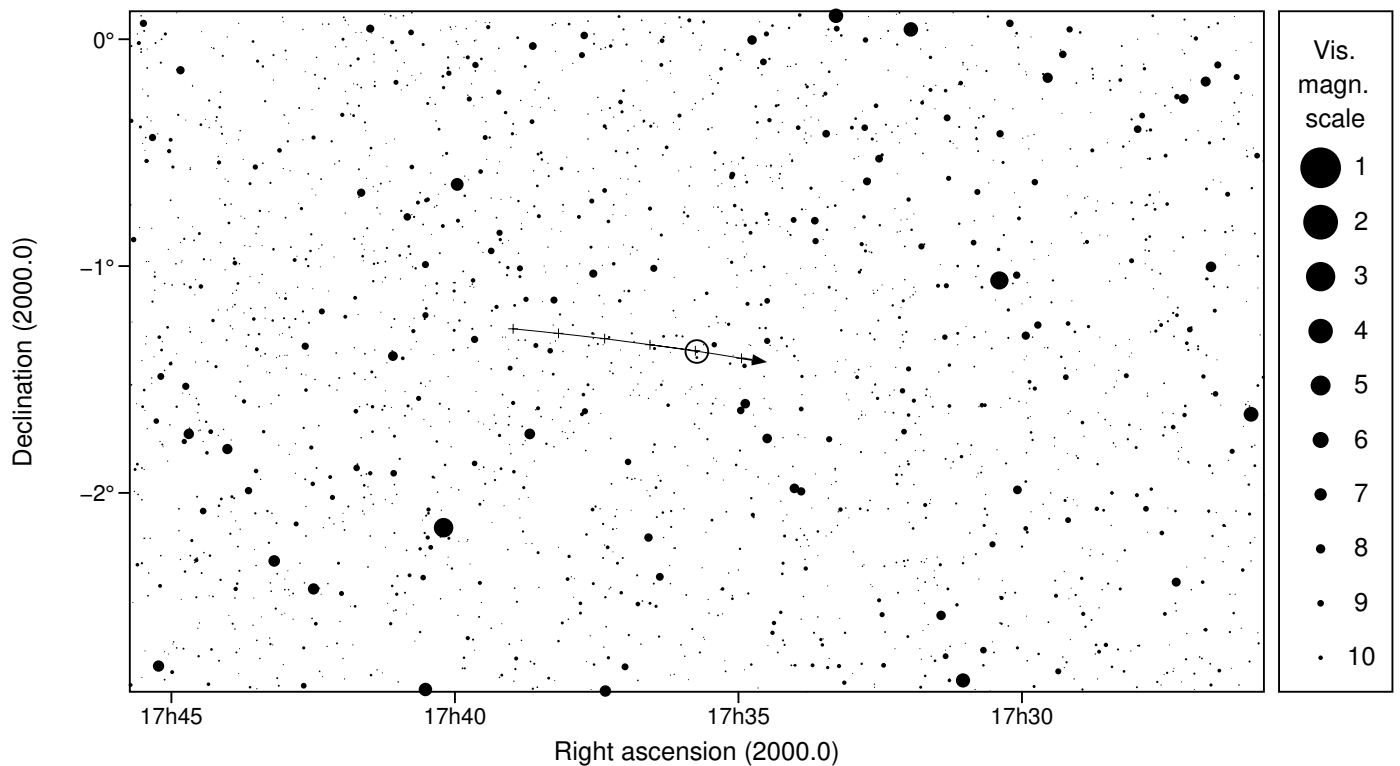
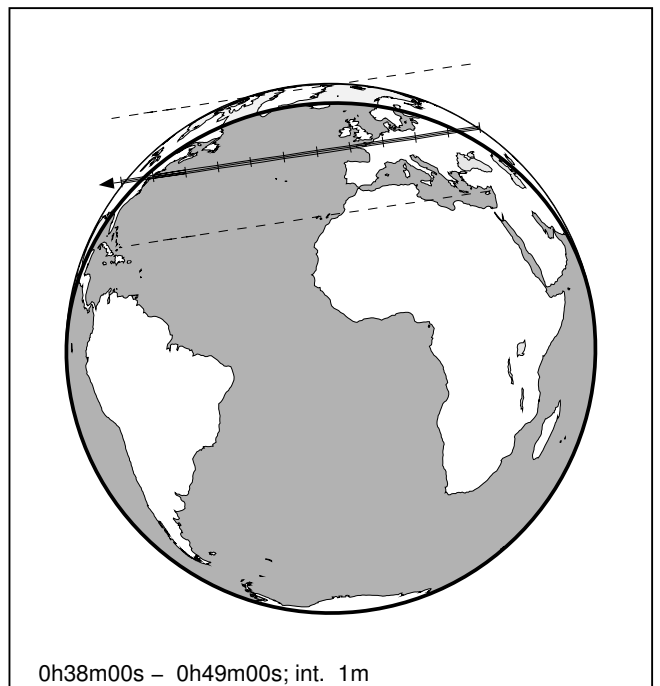
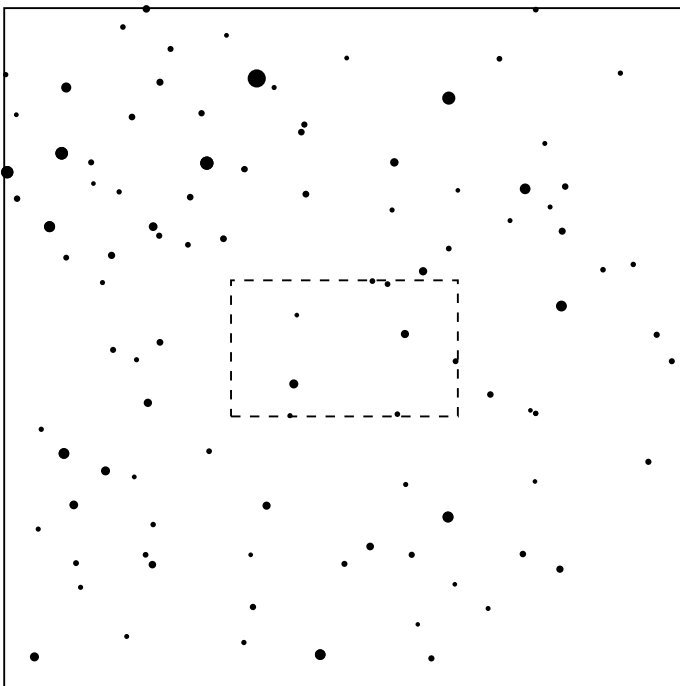
2025 jun 18 0<sup>h</sup>43.5<sup>m</sup> U.T.

**Planet:**  $a = 3.05, e = 0.15$   
 V. mag. = 14.09 Diam. = 78.0 km = 0.05"  
 $\mu = 30.50''/h$   $\pi = 4.12''$  Ref. = EG2023

**Star:** Source cat. DR3  
 $\alpha = 17^h35^m44.174^s$   $\delta = -01^\circ22'33.39''$   
 Vmag = 10.87 Bmag = 11.53

$\Delta m = 3.3$  Max. dur. = 5.9s

Sun : 157° Moon : 84° , 59%



# 893 Leopoldina & TYC 5080-01162-1

2025 jun 18 0<sup>h</sup>43.5<sup>m</sup> U.T.

