

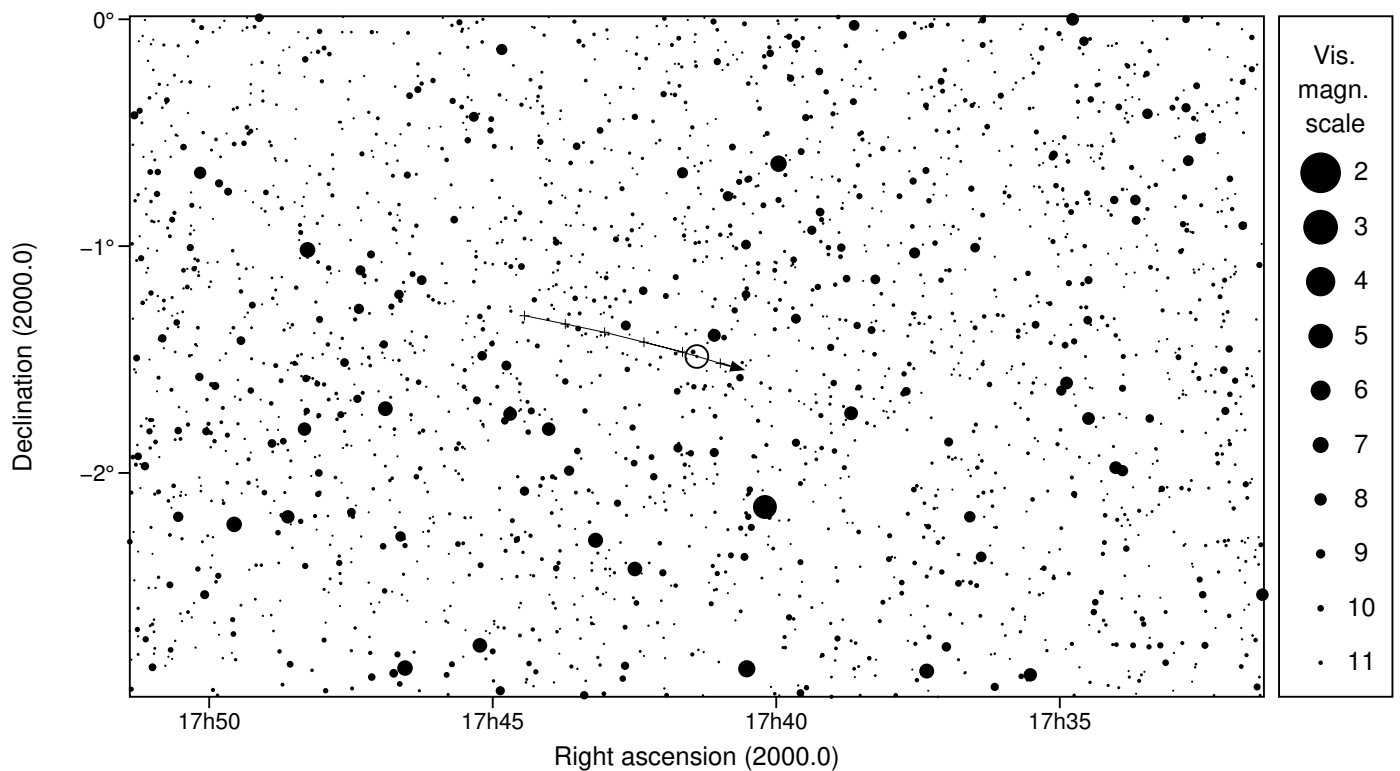
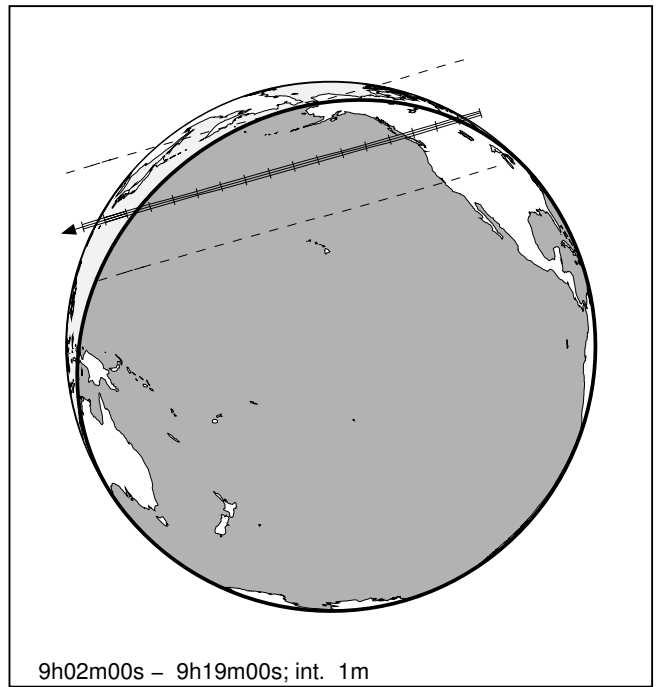
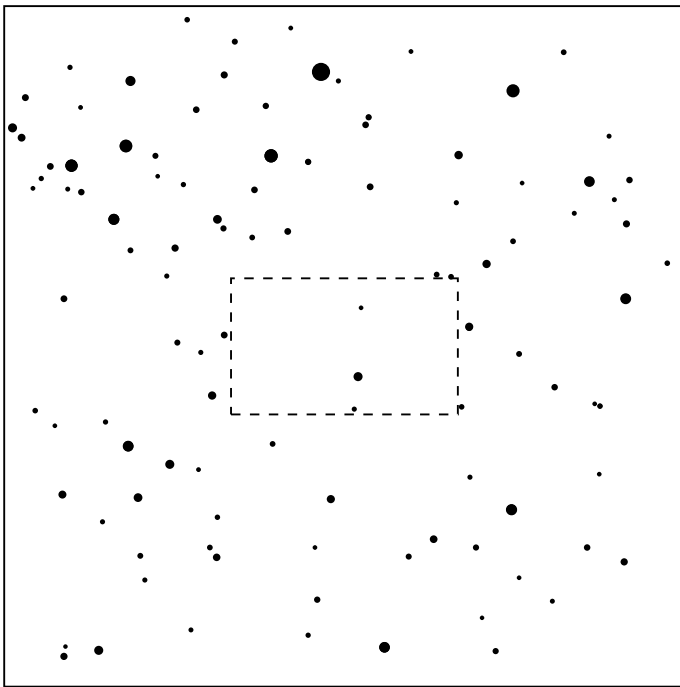
788 Hohensteina & UCAC4 443-073445

2025 jul 4 9^h10.6^m U.T.

Planet: $a = 3.14$, $e = 0.12$
 V. mag. = 12.52 Diam. = 109.0 km = 0.08"
 $\mu = 25.99''/h$ $\pi = 4.73''$ Ref. = EG2023

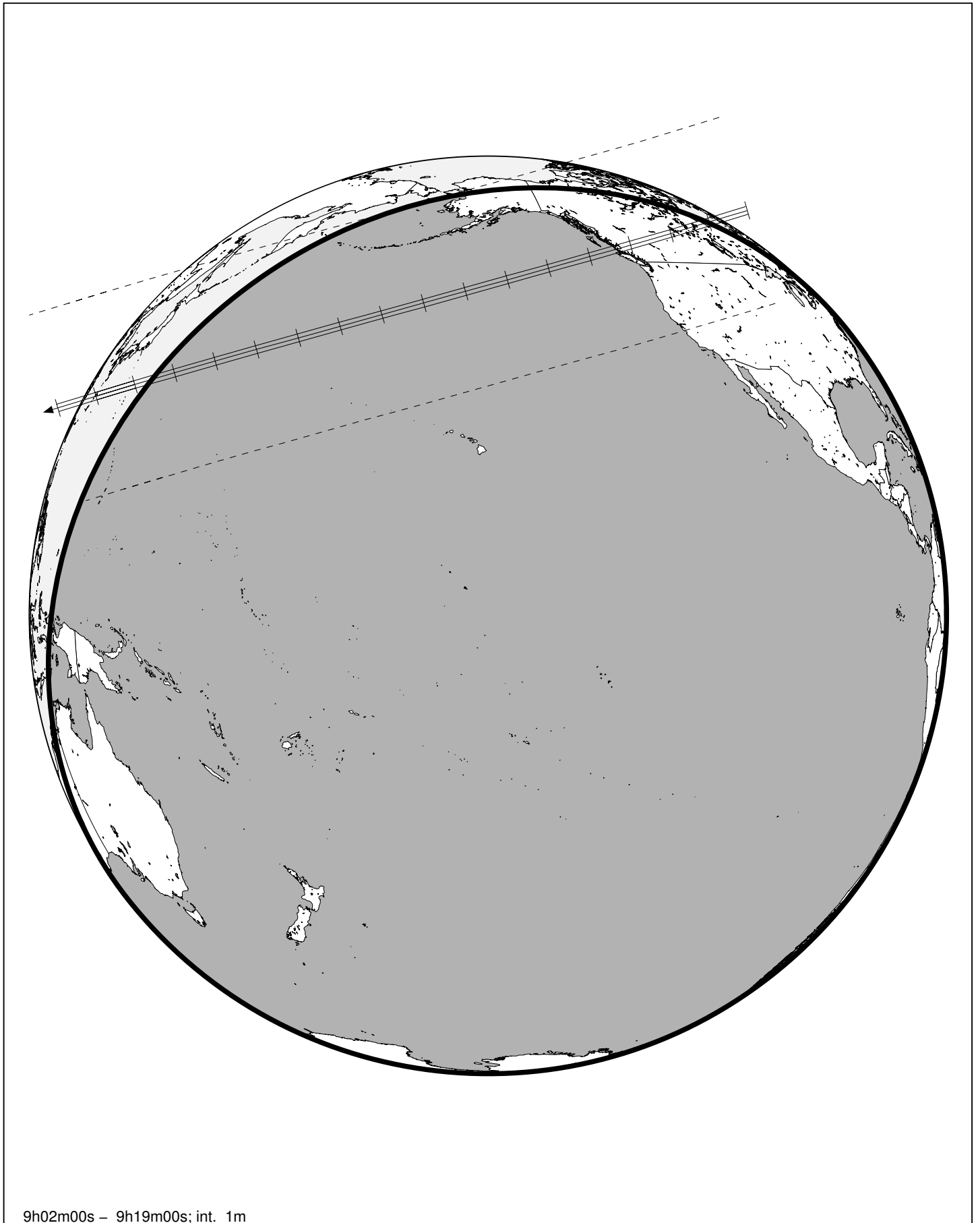
Star: Source cat. DR3
 $\alpha = 17^h 41^m 23.894^s$ $\delta = -01^\circ 29' 17.40''$
 Vmag = 11.73 Bmag = 12.90

$\Delta m = 1.2$ Max. dur. = 11.2s Sun : 152° Moon : 60° , 65%



788 Hohensteina & UCAC4 443-073445

2025 jul 4 9^h10.6^m U.T.



9h02m00s – 9h19m00s; int. 1m