

71 Niobe & UCAC4 272-105626

2025 sep 15 1^h49.2^m U.T.

Planet: $a = 2.76, e = 0.17$
 V. mag. = 11.82 Diam. = 87.3 km = 0.05"
 $\mu = 47.34''/h$ $\pi = 3.96''$ Ref. = EG2023

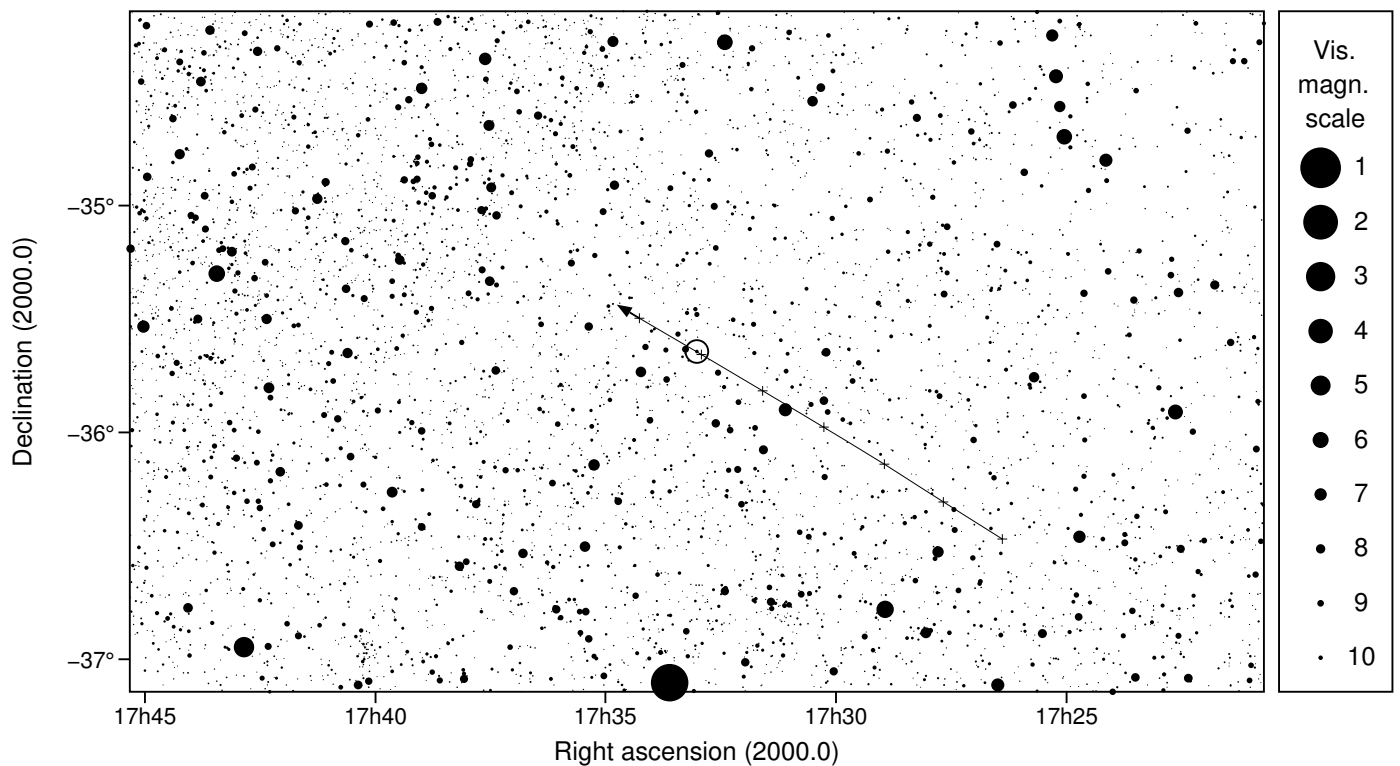
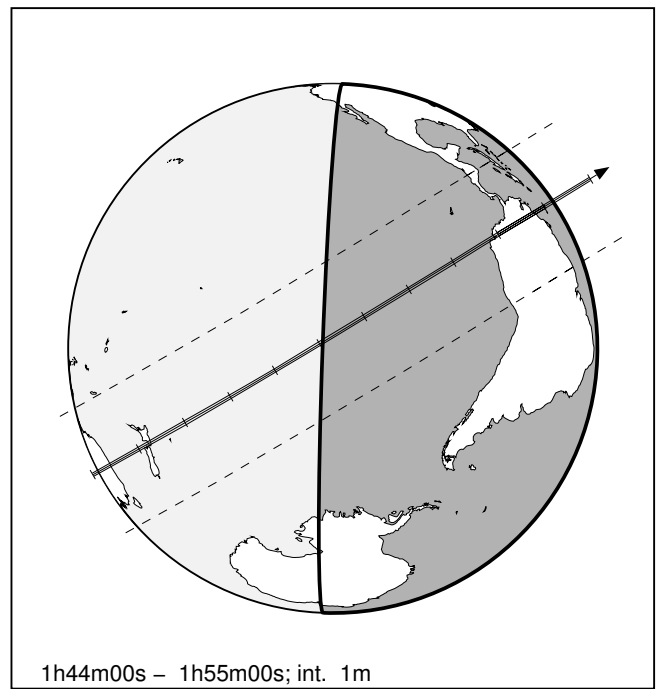
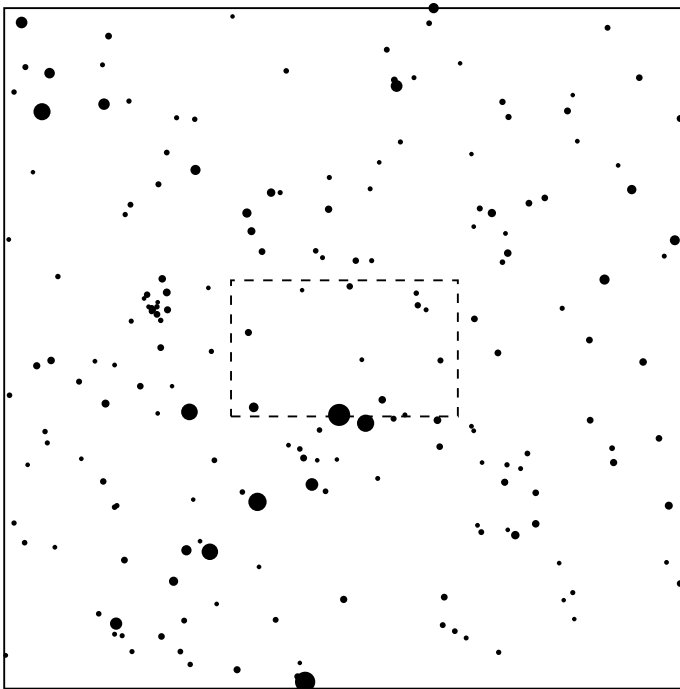
Star: Source cat. DR3
 $\alpha = 17^h33^m01.343^s$ $\delta = -35^\circ38'32.67''$
 Vmag = 10.45 Bmag = 12.55

$\Delta m = 1.6$

Max. dur. = 4.1s

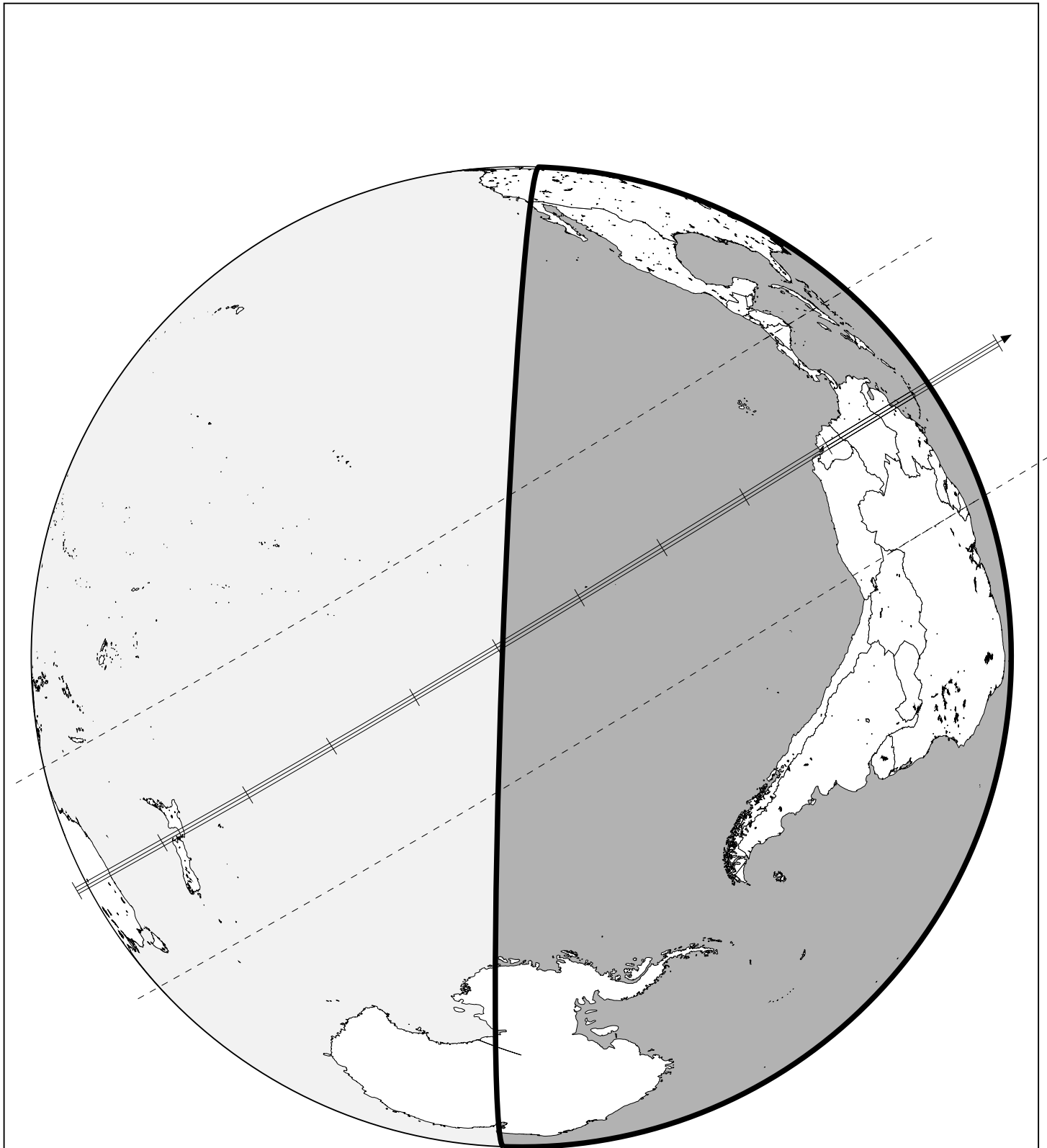
Sun : 92°

Moon : 171° , 43%



71 Niobe & UCAC4 272-105626

2025 sep 15 1^h49.2^m U.T.



1h44m00s – 1h55m00s; int. 1m