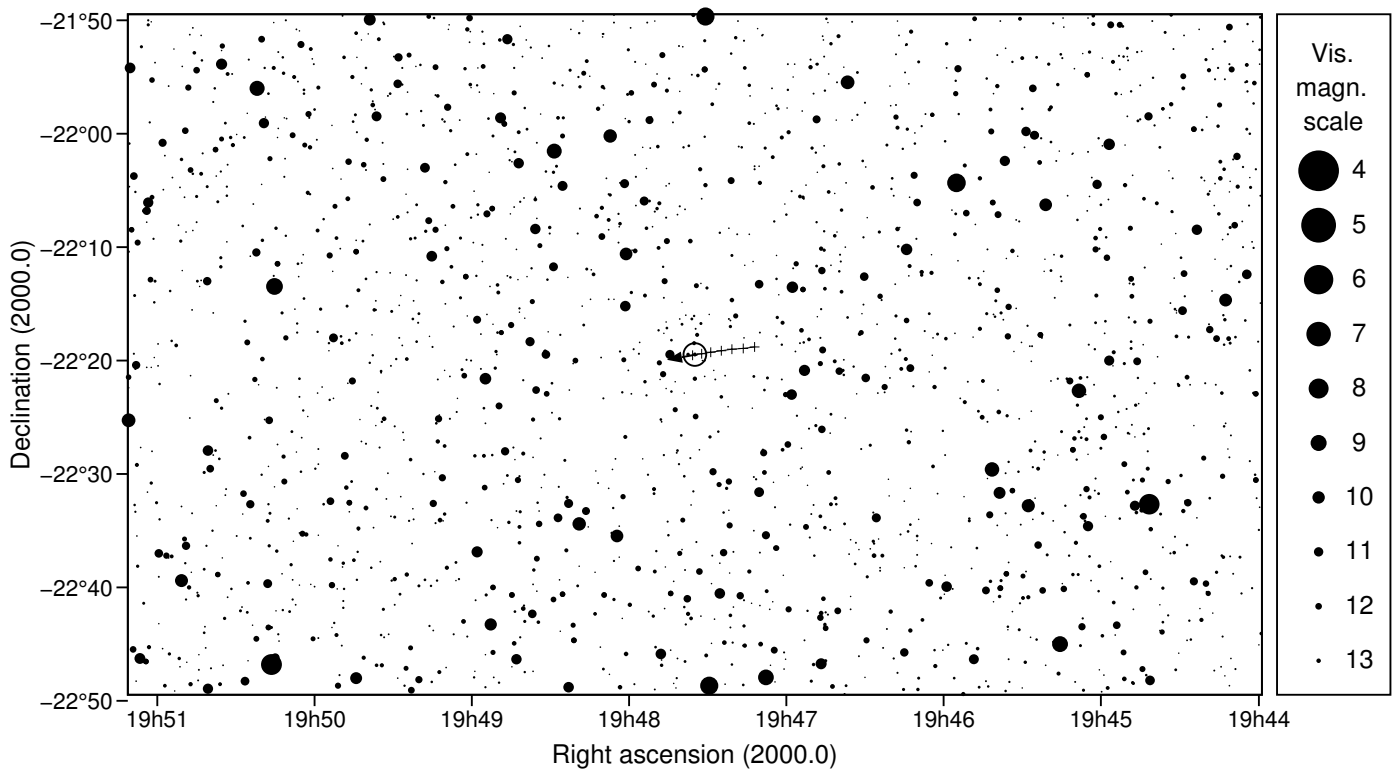
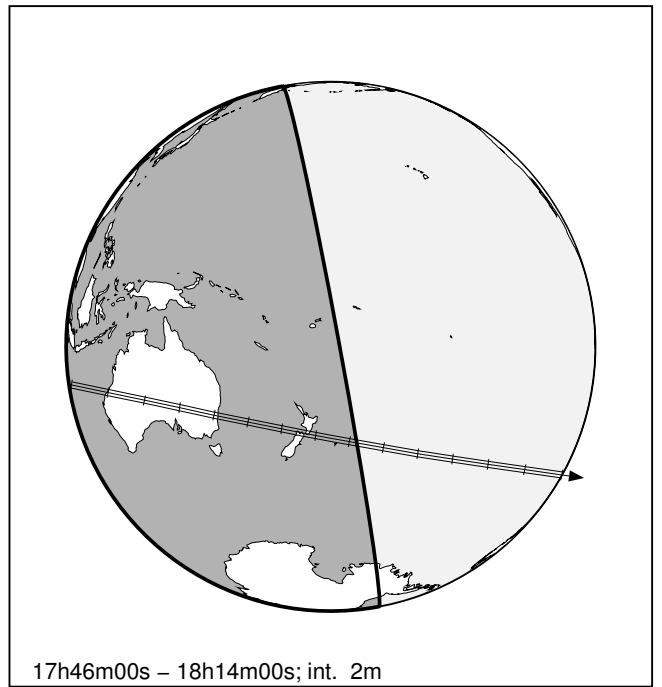
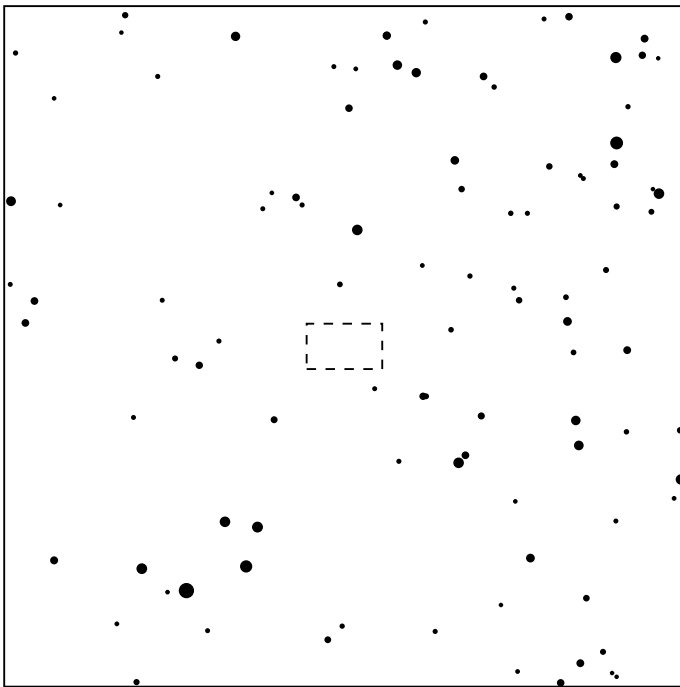


95626 2002GZ32 & UCAC4 339-188482

2025 apr 16 17^h60.0^m U.T.

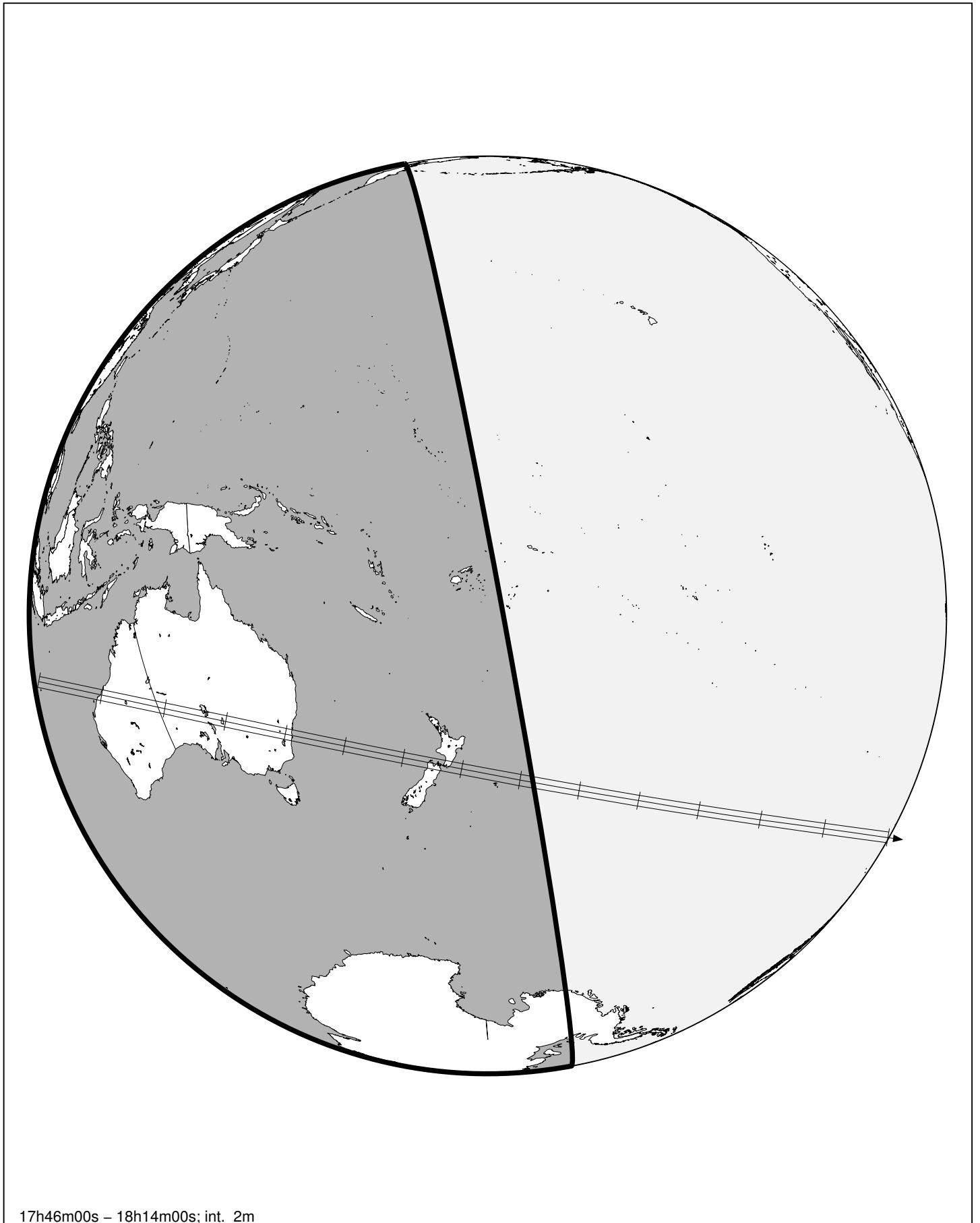
Planet: $a = 23.10$, $e = 0.22$
 V. mag. = 20.14 Diam. = 152.8 km = 0.01"
 $\mu = 1.96''/h$ $\pi = 0.48''$ Ref. = MPO745323
 $\Delta m = 6.8$ Max. dur. = 21.1s

Star: Source cat. DR3
 $\alpha = 19^h47^m34.935^s$ $\delta = -22^\circ19'26.42''$
 Vmag = 13.36 Bmag = 13.94
 Sun : 91° Moon : 48° , 88%



95626 2002GZ32 & UCAC4 339-188482

2025 apr 16 17^h60.0^m U.T.



17h46m00s - 18h14m00s; int. 2m