

# 216 Kleopatra & TYC 5664-00314-1

2026 sep 11 15<sup>h</sup>53.2<sup>m</sup> U.T.

**Planet:**  $a = 2.79$ ,  $e = 0.25$   
 V. mag. = 12.47    Diam. = 112.6 km = 0.06"  
 $\mu = 23.52''/h$      $\pi = 3.43''$     Ref. = EG2024

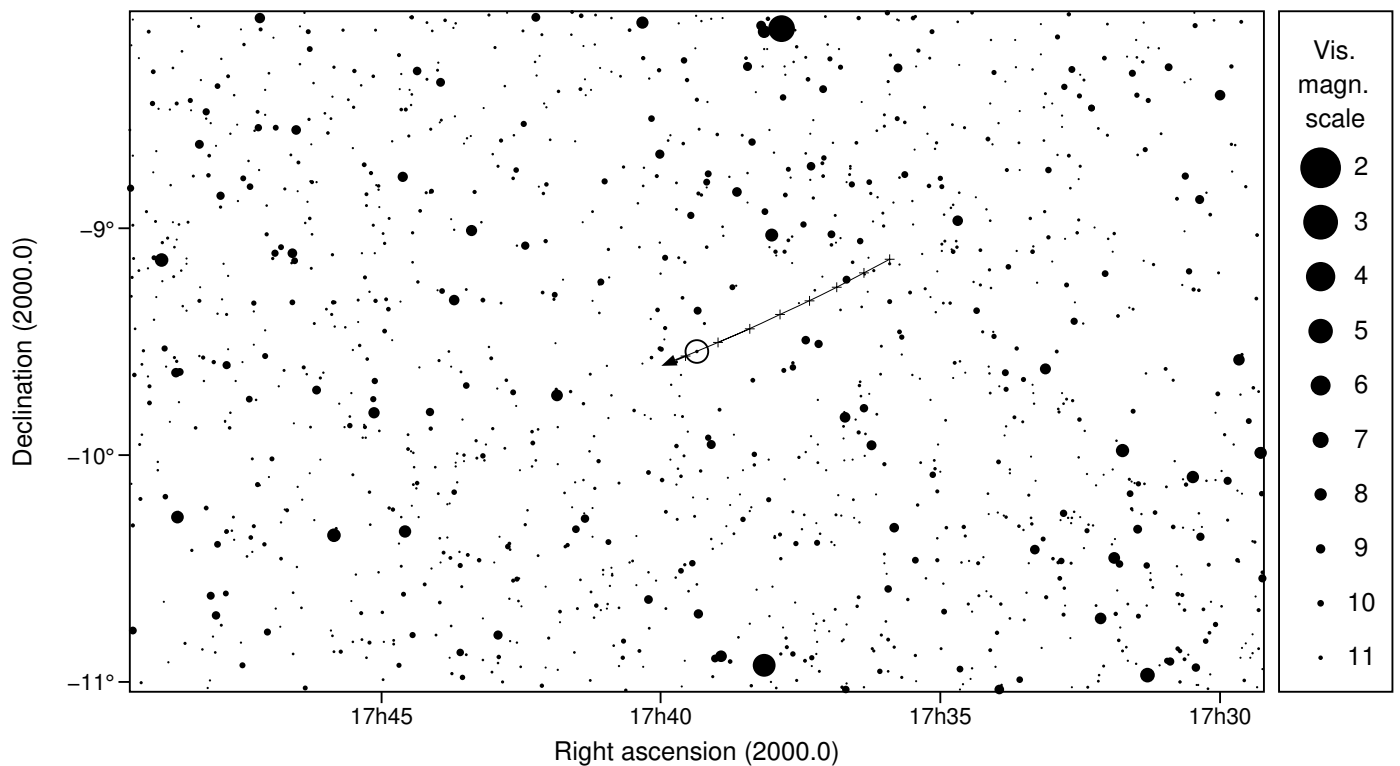
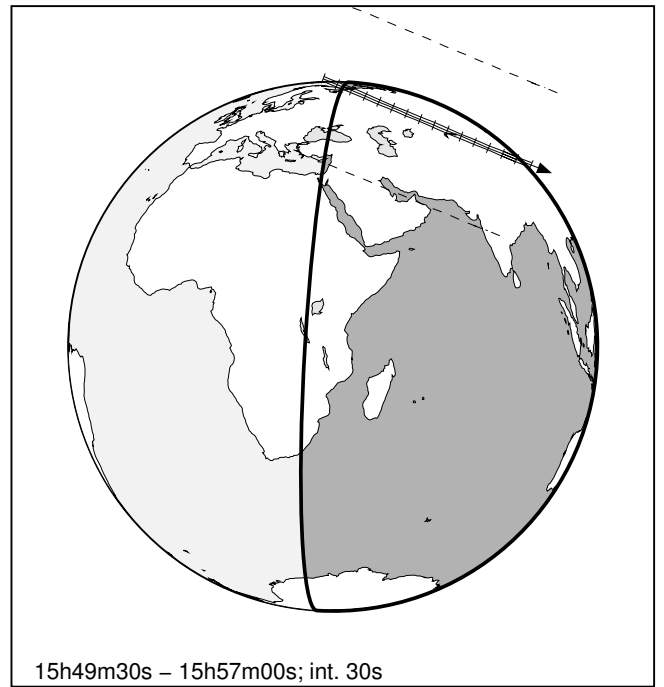
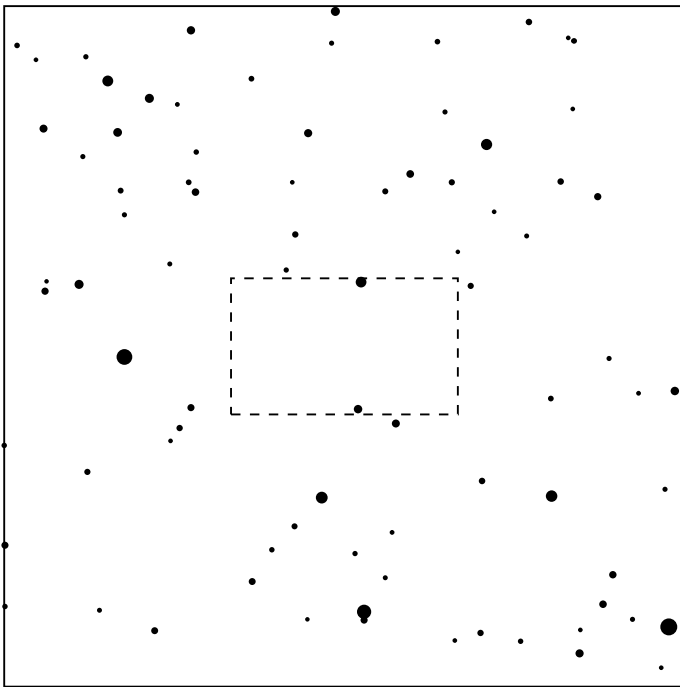
**Star:**    Source cat. DR3  
 $\alpha = 17^h39^m21.463^s$      $\delta = -09^\circ32'37.34''$   
 Vmag = 11.62    Bmag = 12.11

$\Delta m = 1.3$

Max. dur. = 9.3s

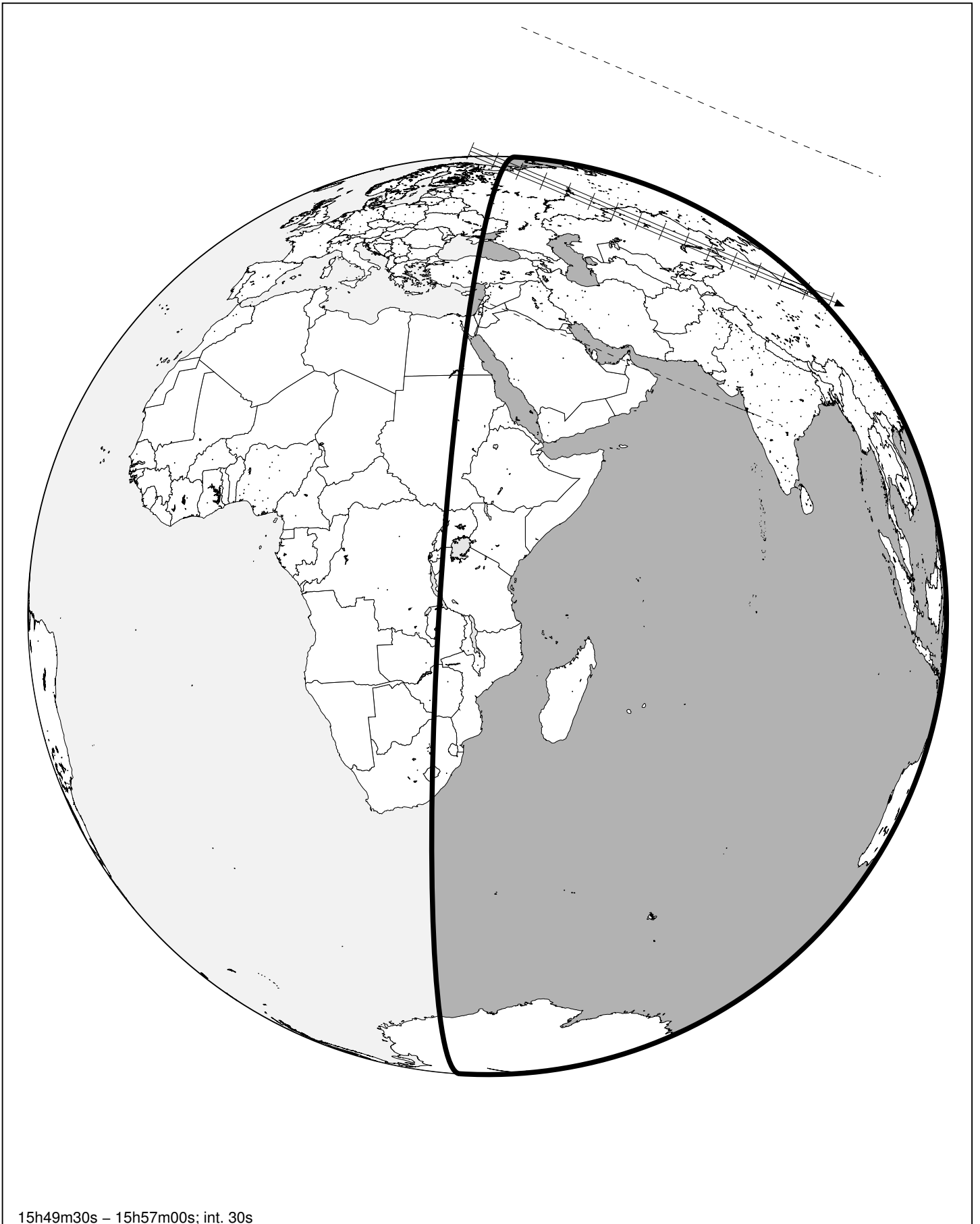
Sun : 96°

Moon : 90° , 0%



# 216 Kleopatra & TYC 5664-00314-1

2026 sep 11 15<sup>h</sup>53.2<sup>m</sup> U.T.



15h49m30s - 15h57m00s; int. 30s