

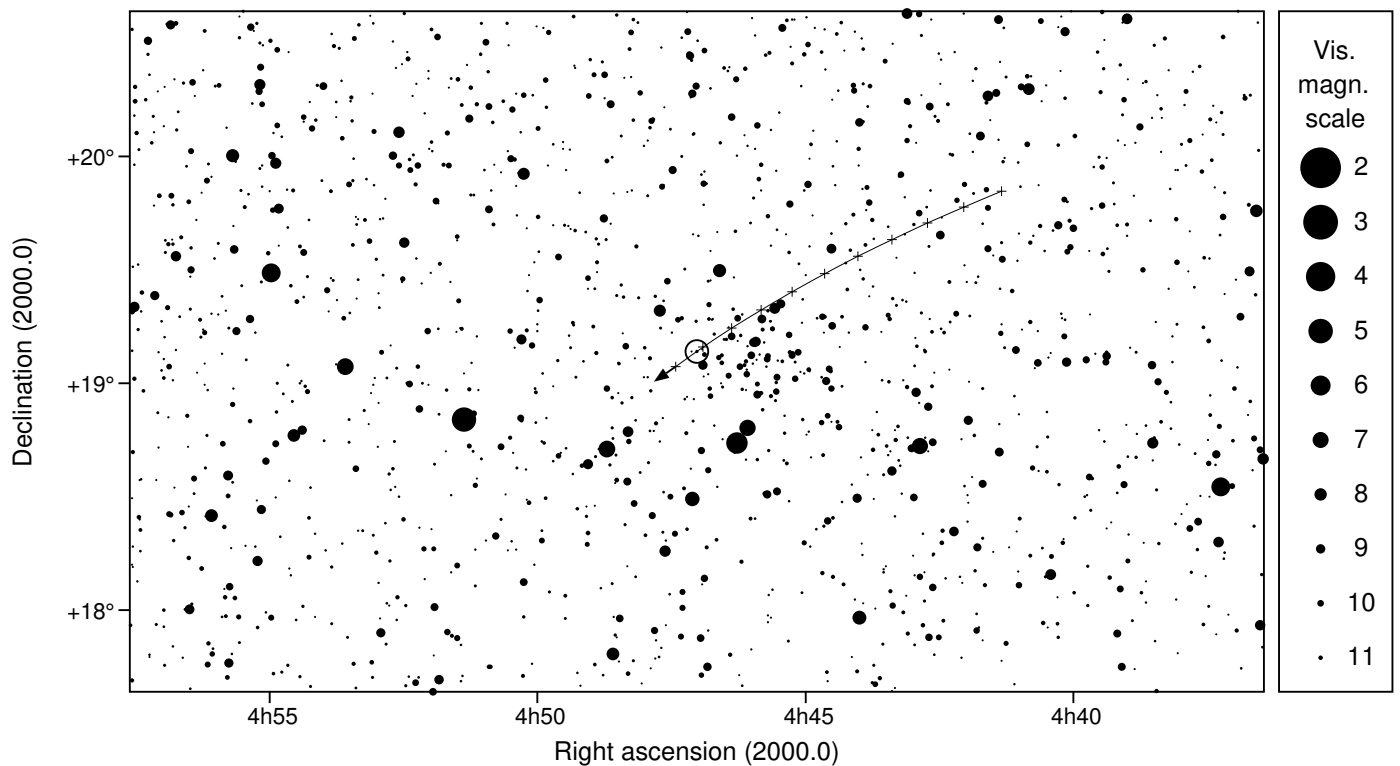
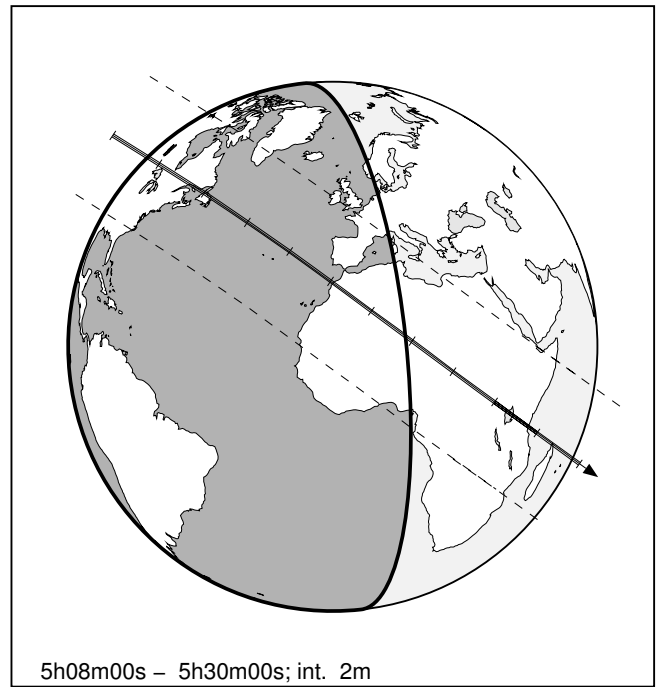
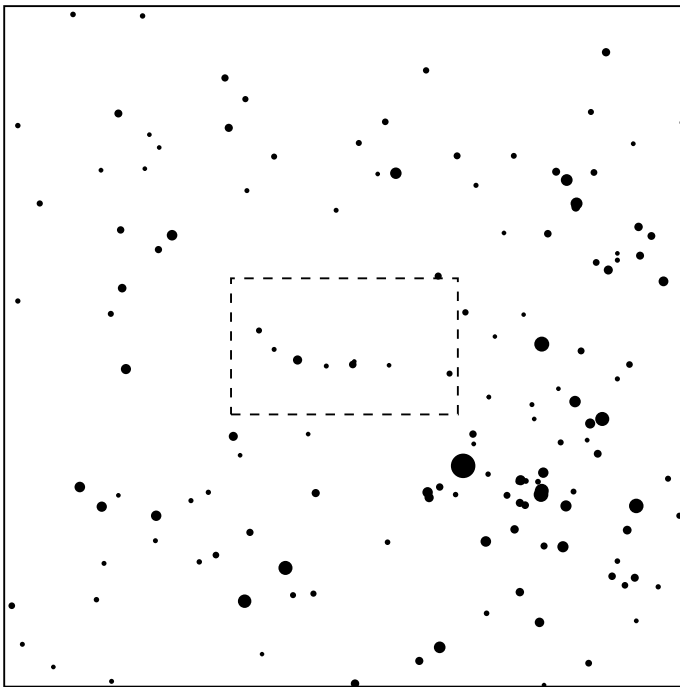
# 631 Philippina & TYC 1275-01802-1

2026 sep 22 5<sup>h</sup>19.5<sup>m</sup> U.T.

**Planet:** a = 2.79, e = 0.08  
 V. mag. = 13.76 Diam. = 75.9 km = 0.04"  
 $\mu$  = 22.36"/h  $\pi$  = 3.78" Ref. = EG2024

**Star:** Source cat. DR3  
 $\alpha$  = 4<sup>h</sup>47<sup>m</sup>01.661<sup>s</sup>  $\delta$  = +19°08'19.27"  
 Vmag = 11.65 Bmag = 11.87

$\Delta m$  = 2.3 Max. dur. = 7.2s Sun : 106° Moon : 127° , 80%



# 631 Philippina & TYC 1275-01802-1

2026 sep 22 5<sup>h</sup>19.5<sup>m</sup> U.T.



5h08m00s – 5h30m00s; int. 2m