

617 Patroclus & TYC 2910-01401-1

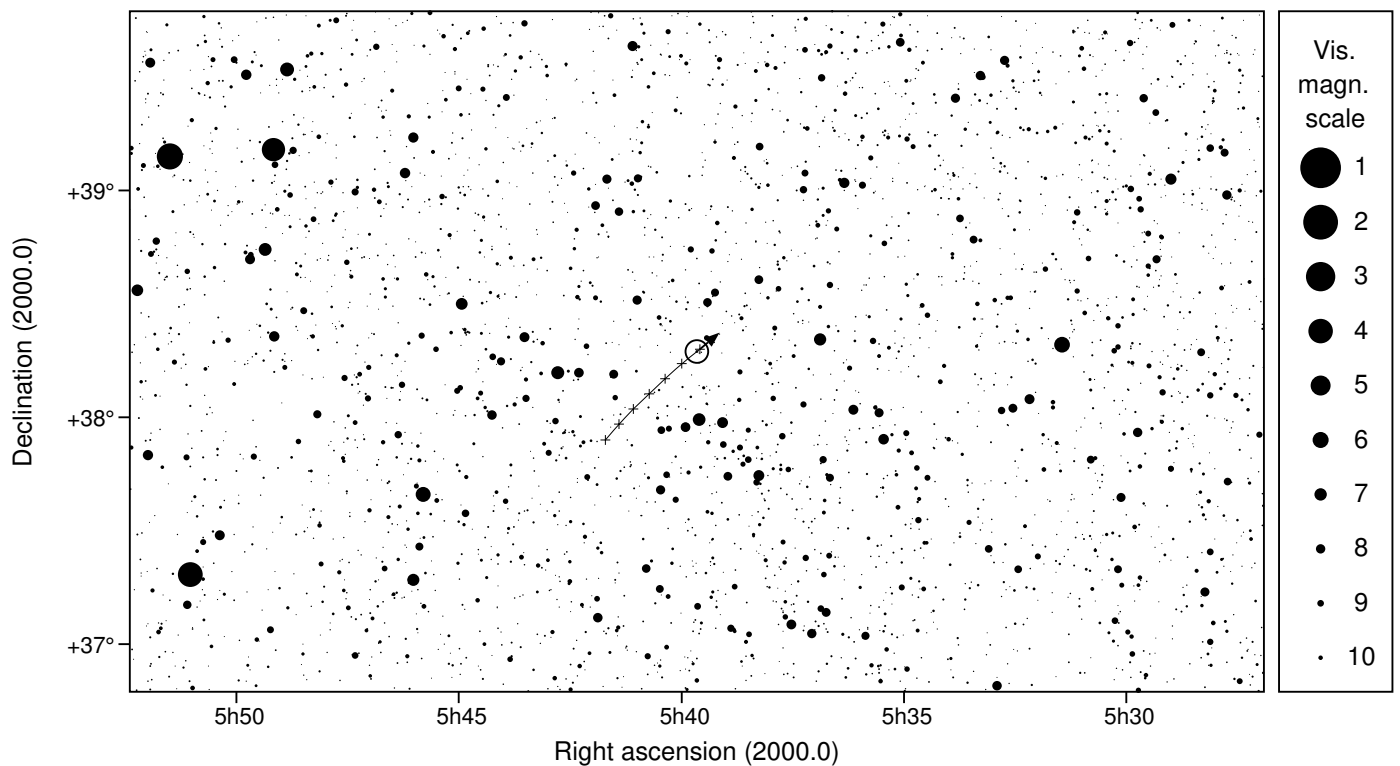
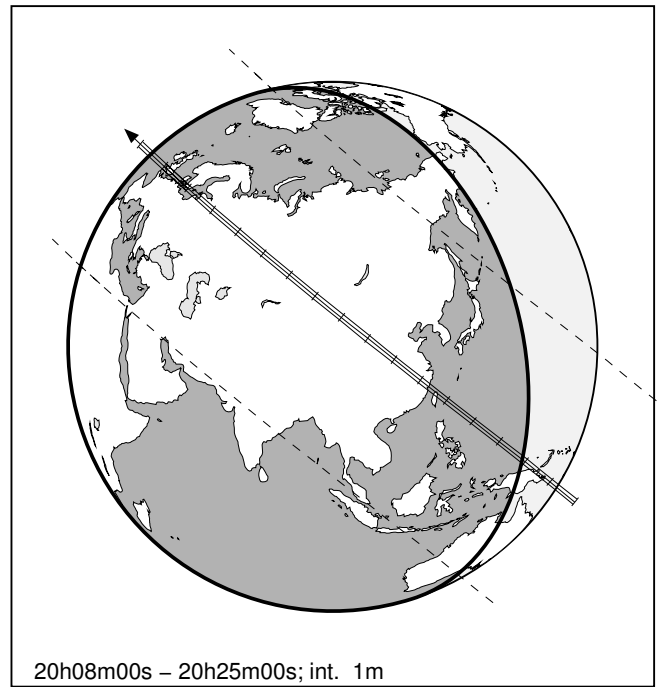
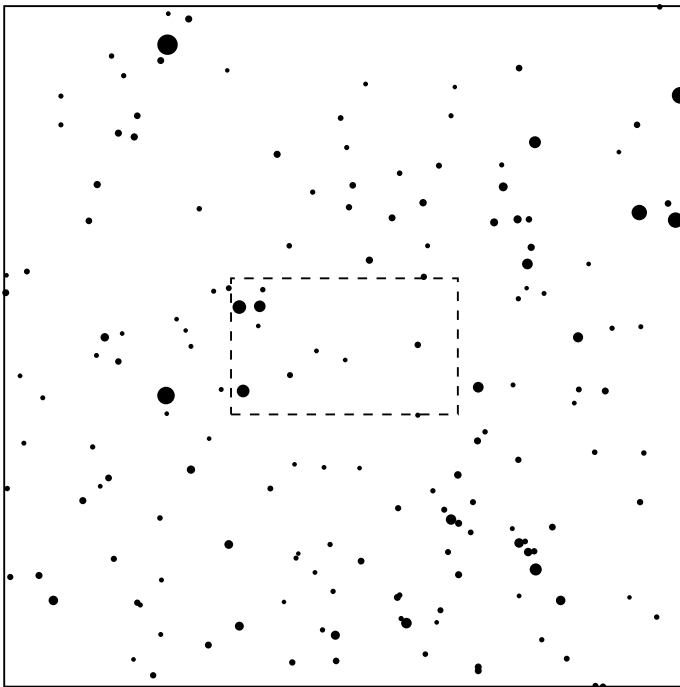
2026 nov 5 20^h16.6^m U.T.

Planet: $a = 5.23$, $e = 0.14$
 V. mag. = 15.45 Diam. = 149.0 km = 0.05"
 $\mu = 15.29''/h$ $\pi = 2.04''$ Ref. = EG2024

Star: Source cat. DR3
 $\alpha = 5^h39^m39.428^s$ $\delta = +38^\circ17'23.29''$
 Vmag = 10.99 Bmag = 11.06

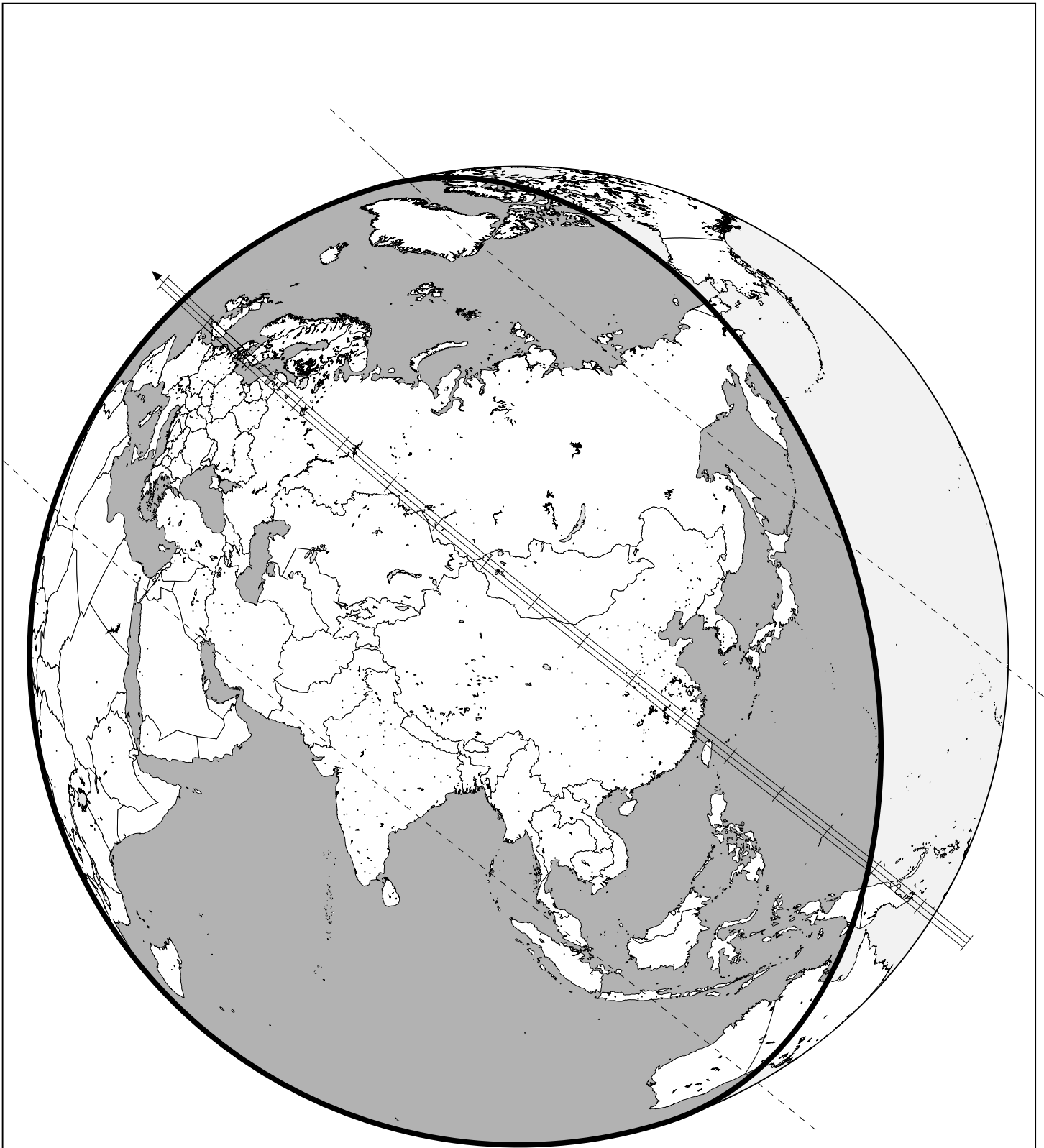
$\Delta m = 4.5$ Max. dur. = 11.2s

Sun : 135° Moon : 97° , 12%



617 Patroclus & TYC 2910-01401-1

2026 nov 5 20^h16.6^m U.T.



20h08m00s – 20h25m00s; int. 1m