

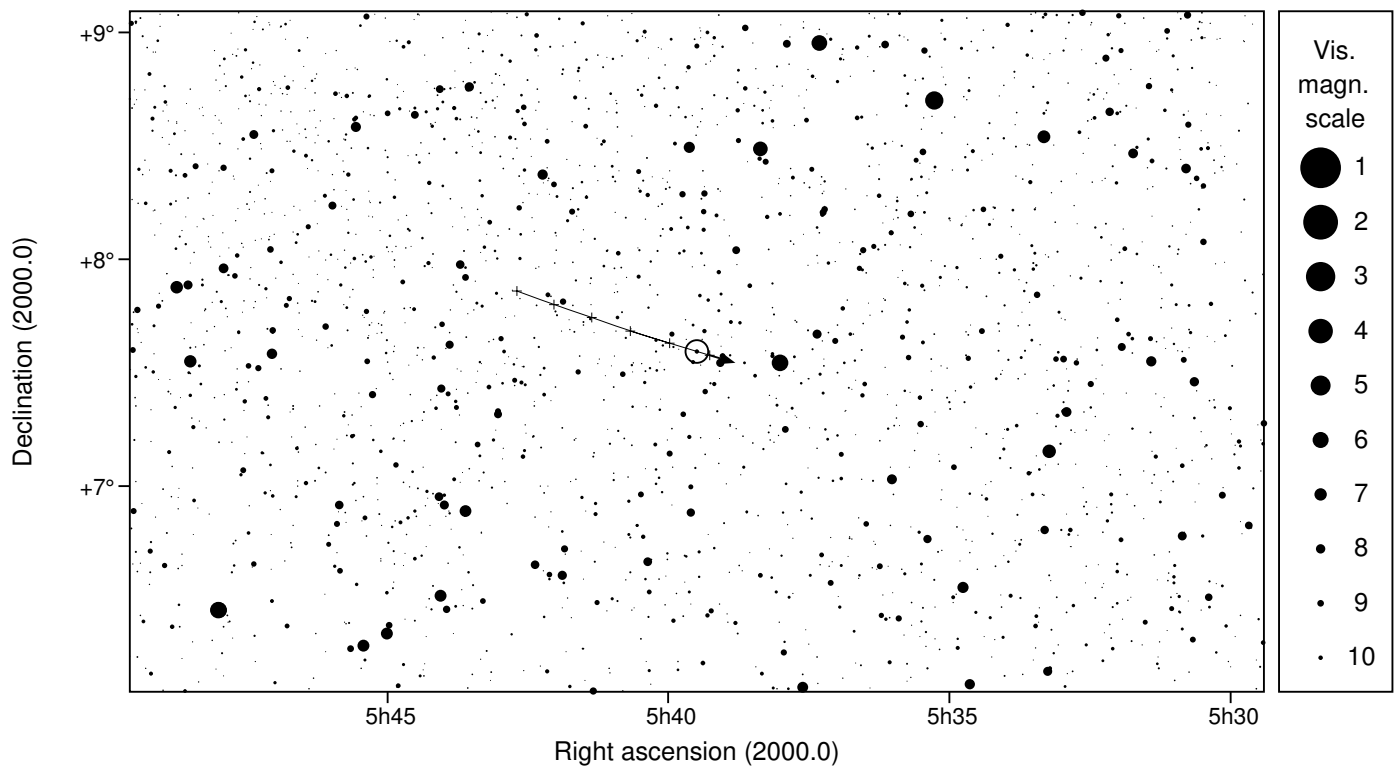
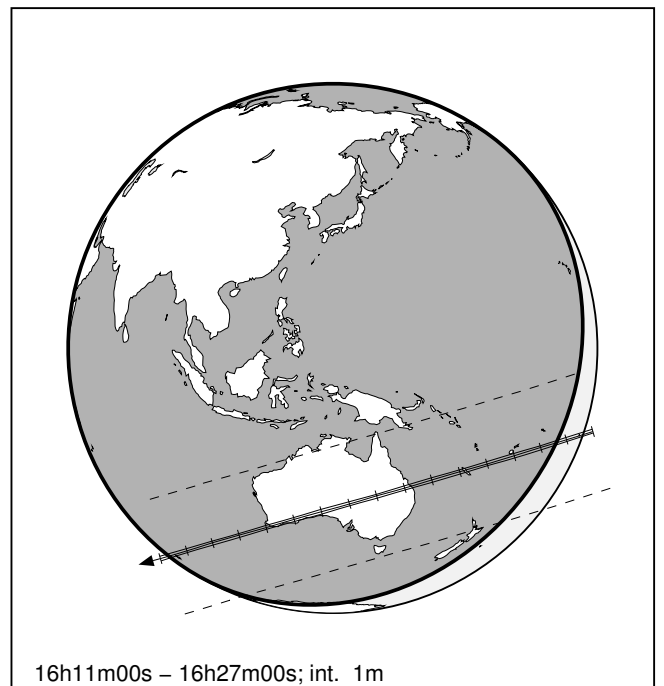
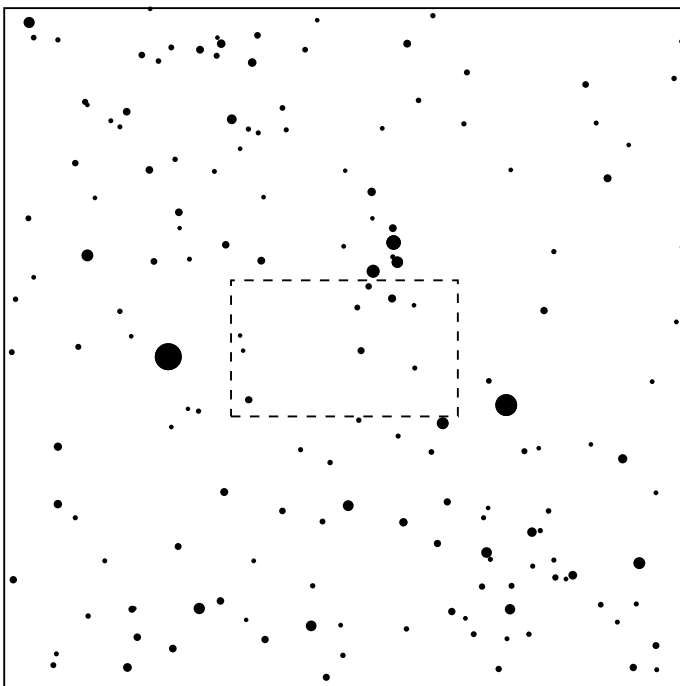
635 Vundtia & TYC 0714-00844-1

2026 nov 28 16^h19.0^m U.T.

Planet: a = 3.14, e = 0.09
 V. mag. = 13.39 Diam. = 100.0 km = 0.07"
 μ = 27.90"/h π = 4.42" Ref. = EG2024

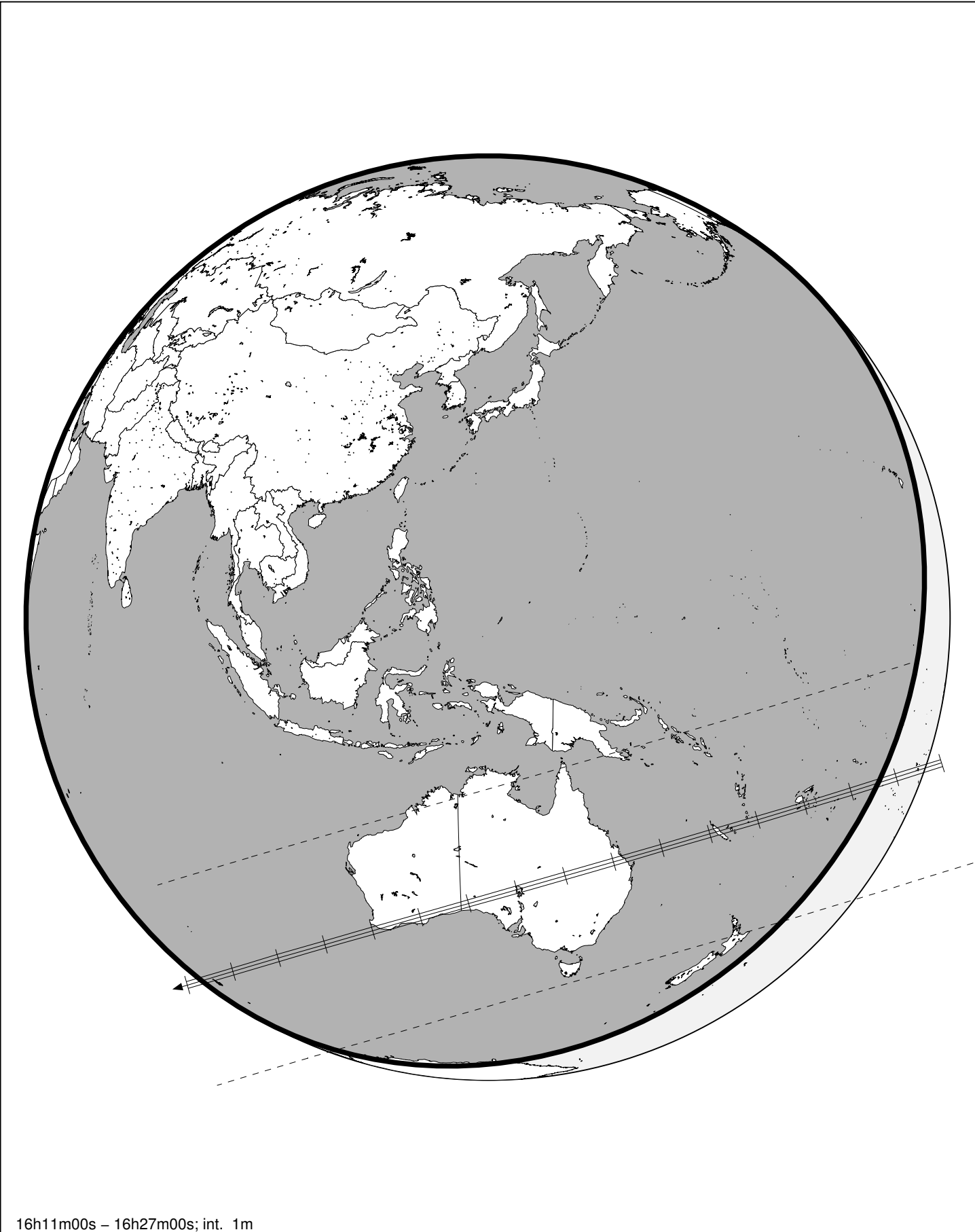
Star: Source cat. DR3
 α = 5^h39^m29.733^s δ = +07°35'34.87"
 Vmag = 10.08 Bmag = 10.38

Δm = 3.4 Max. dur. = 8.9s Sun : 155° Moon : 41° , 78%



635 Vundtia & TYC 0714-00844-1

2026 nov 28 16^h19.0^m U.T.



16h11m00s – 16h27m00s; int. 1m