

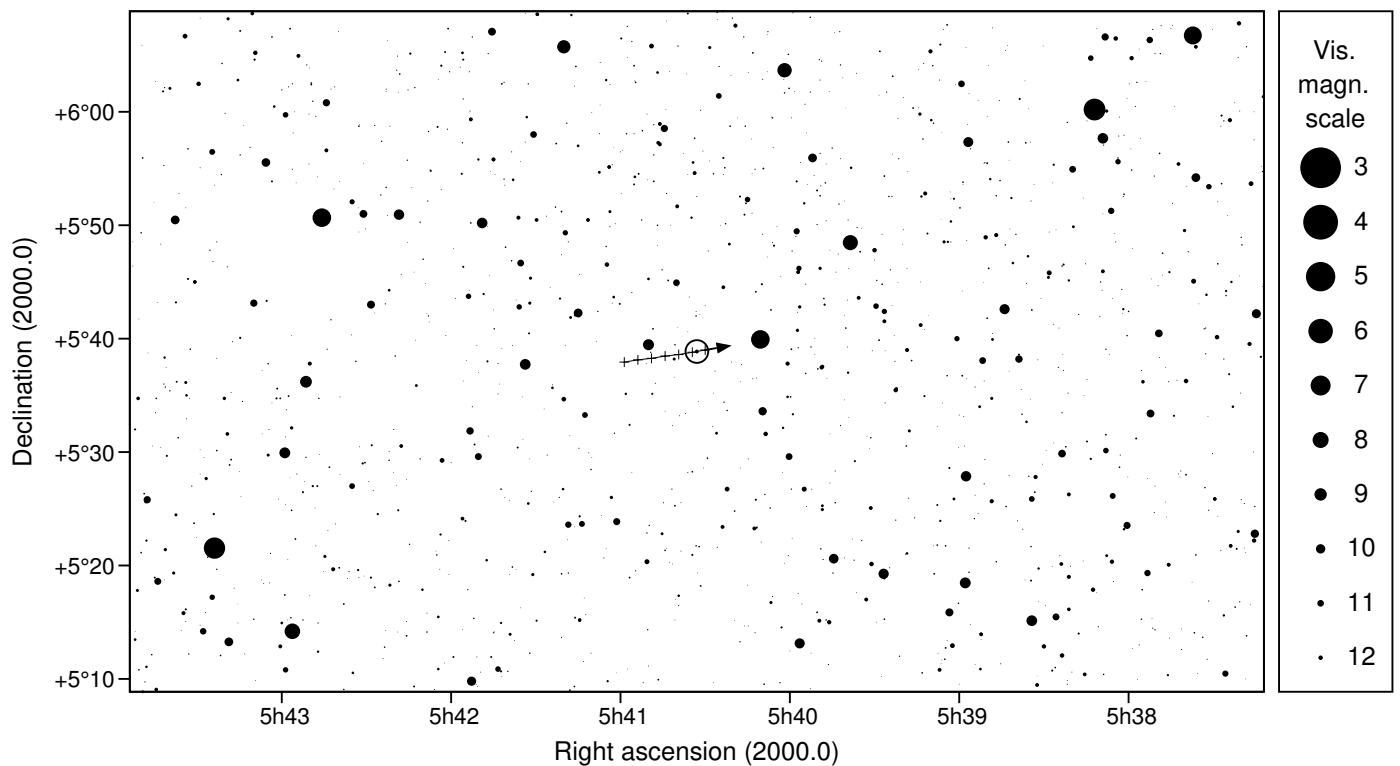
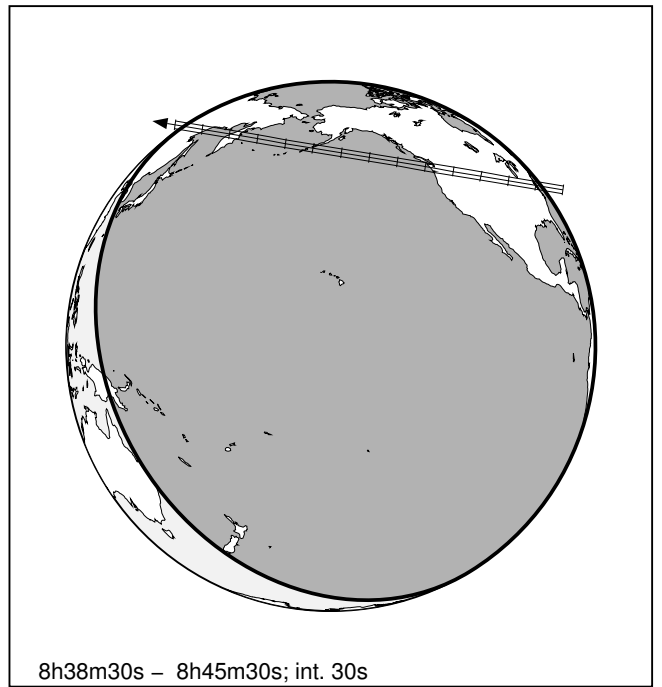
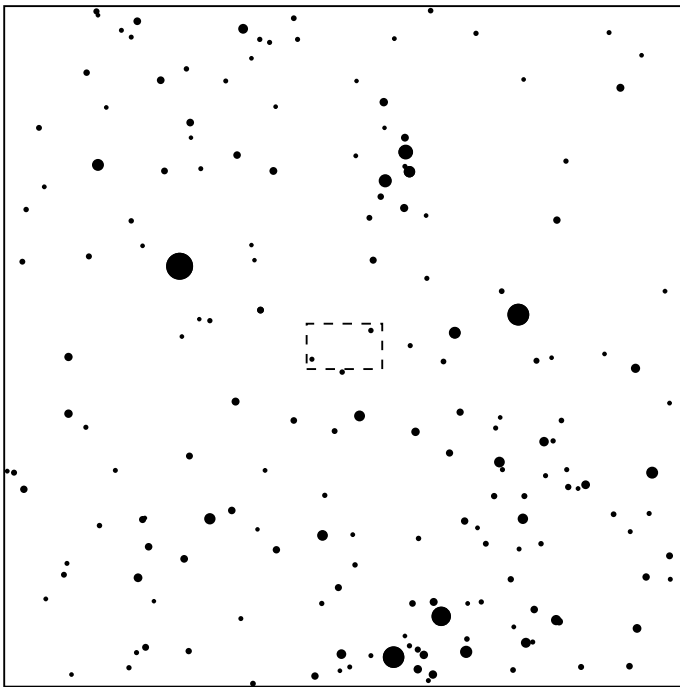
535029 2014WG510 & PPMX 8034808

2026 jan 13 8^h42.1^m U.T.

Planet: a = 39.51, e = 0.22
 V. mag. = 22.69 Diam. = 190.5 km = 0.01"
 μ = 2.94"/h π = 0.23" Ref. = MPO723245

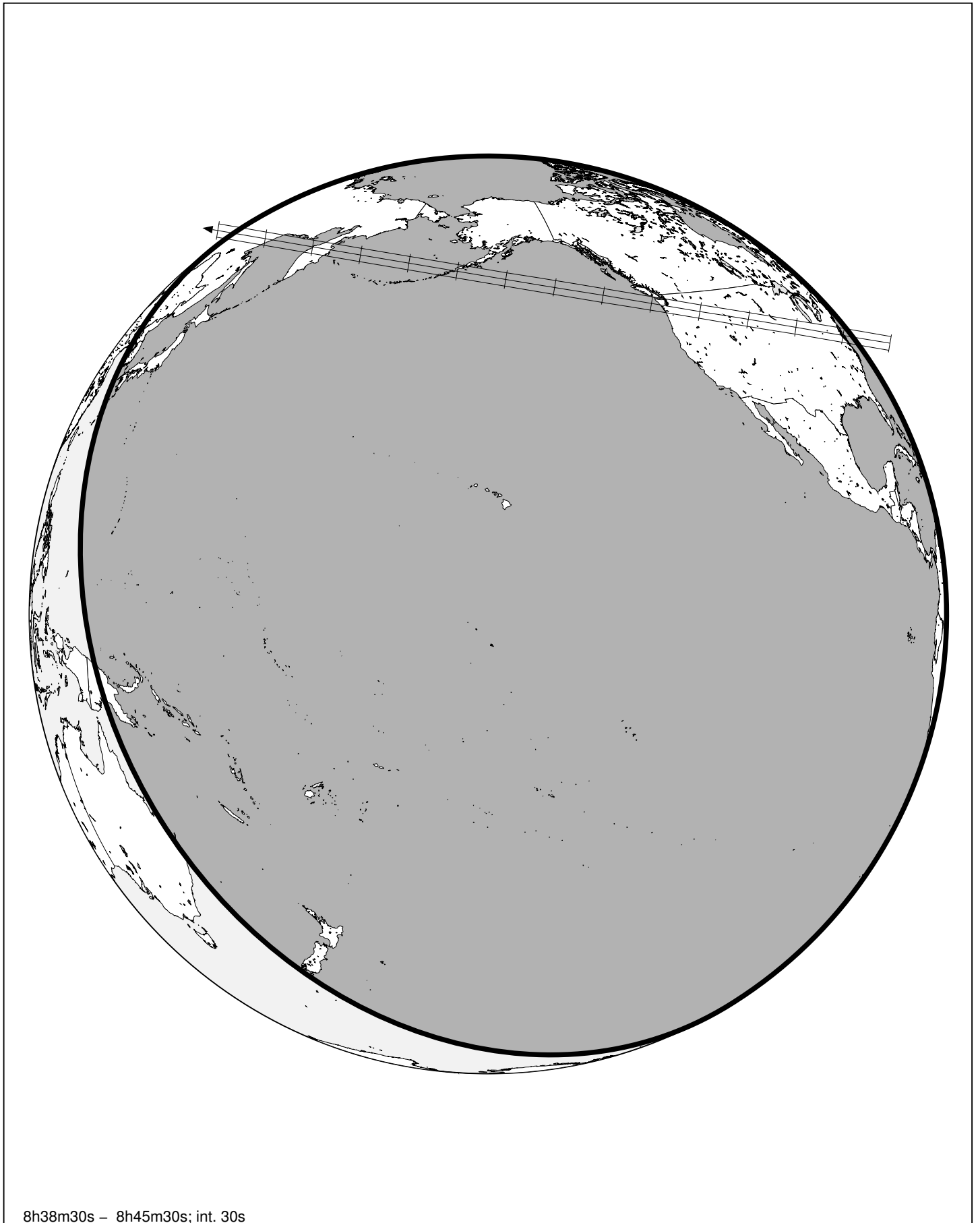
Star: Source cat. PPMX
 α = 5^h40^m32.934^s δ = +05°38'50.76"
 Vmag = 12.63 mag =

Δm = 10.1 Max. dur. = 8.4s Sun : 147° Moon : 141° , 25%



535029 2014WG510 & PPMX 8034808

2026 jan 13 8^h42.1^m U.T.



8h38m30s – 8h45m30s; int. 30s