

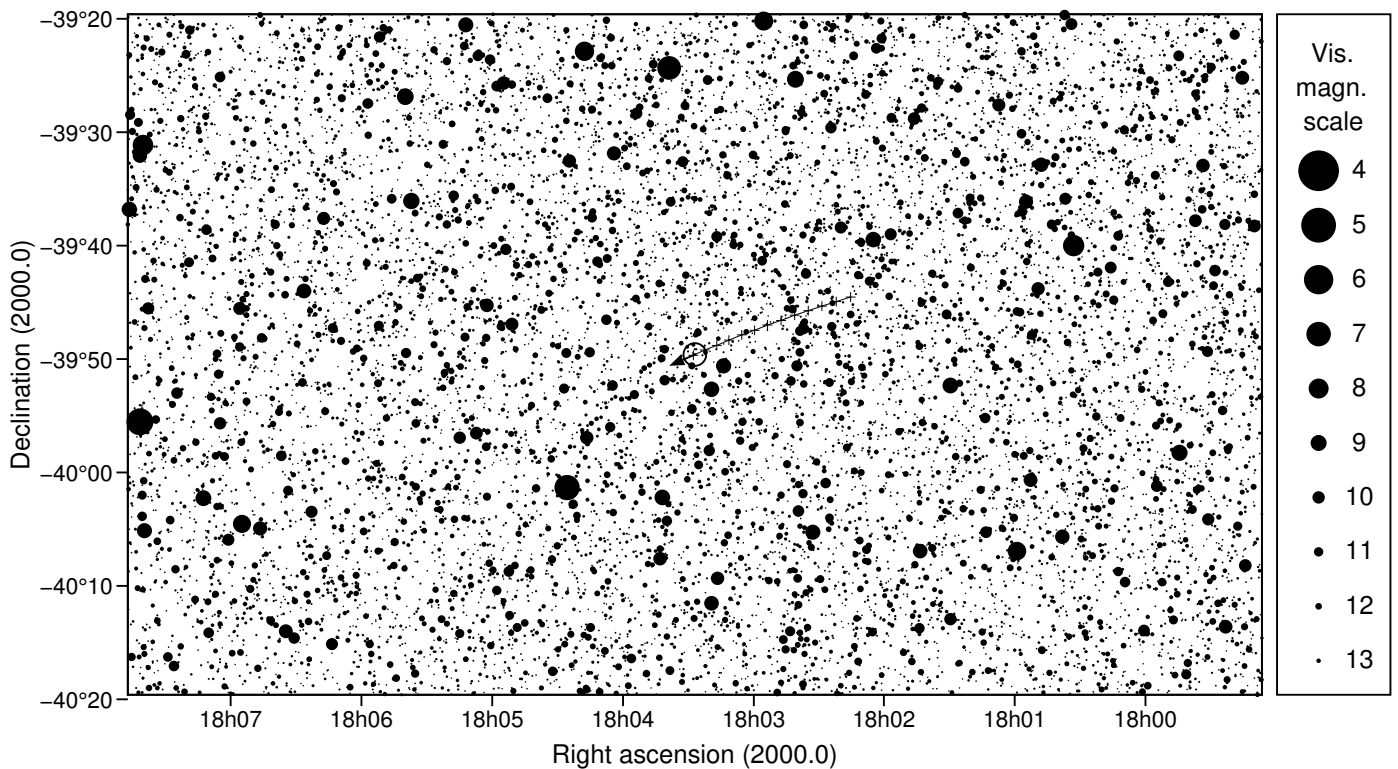
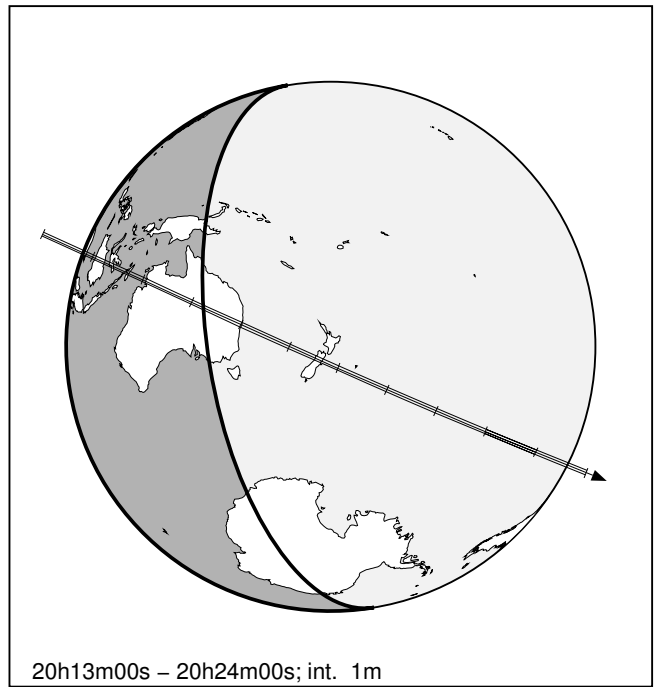
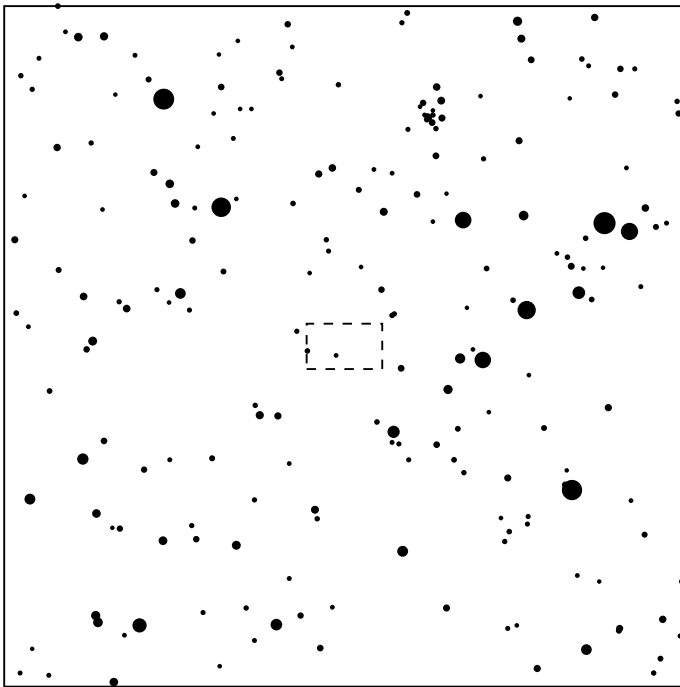
130391 2000JG81 & UCAC4 251-154289

2026 feb 20 20^h18.7^m U.T.

Planet: a = 47.17, e = 0.28
 V. mag. = 23.95 Diam. = 106.7 km = 0.00"
 μ = 2.82"/h π = 0.23" Ref. = MPO693950

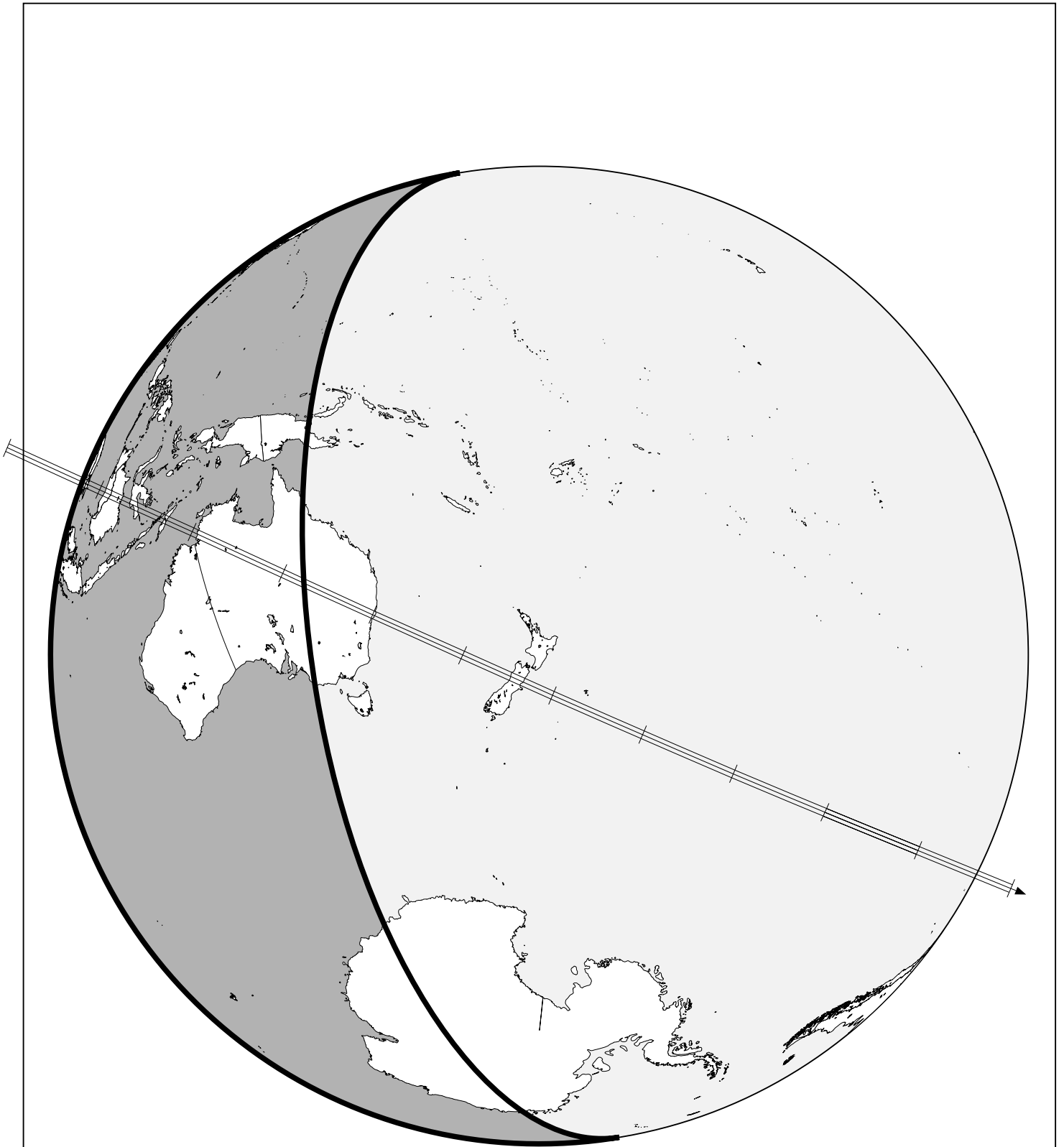
Star: Source cat. DR3
 α = 18^h03^m26.972^s δ = -39°49'35.33"
 Vmag = 13.90 Bmag = 14.51

Δm = 10.0 Max. dur. = 4.9s Sun : 62° Moon : 103° , 13%



130391 2000JG81 & UCAC4 251-154289

2026 feb 20 20^h18.7^m U.T.



20h13m00s – 20h24m00s; int. 1m