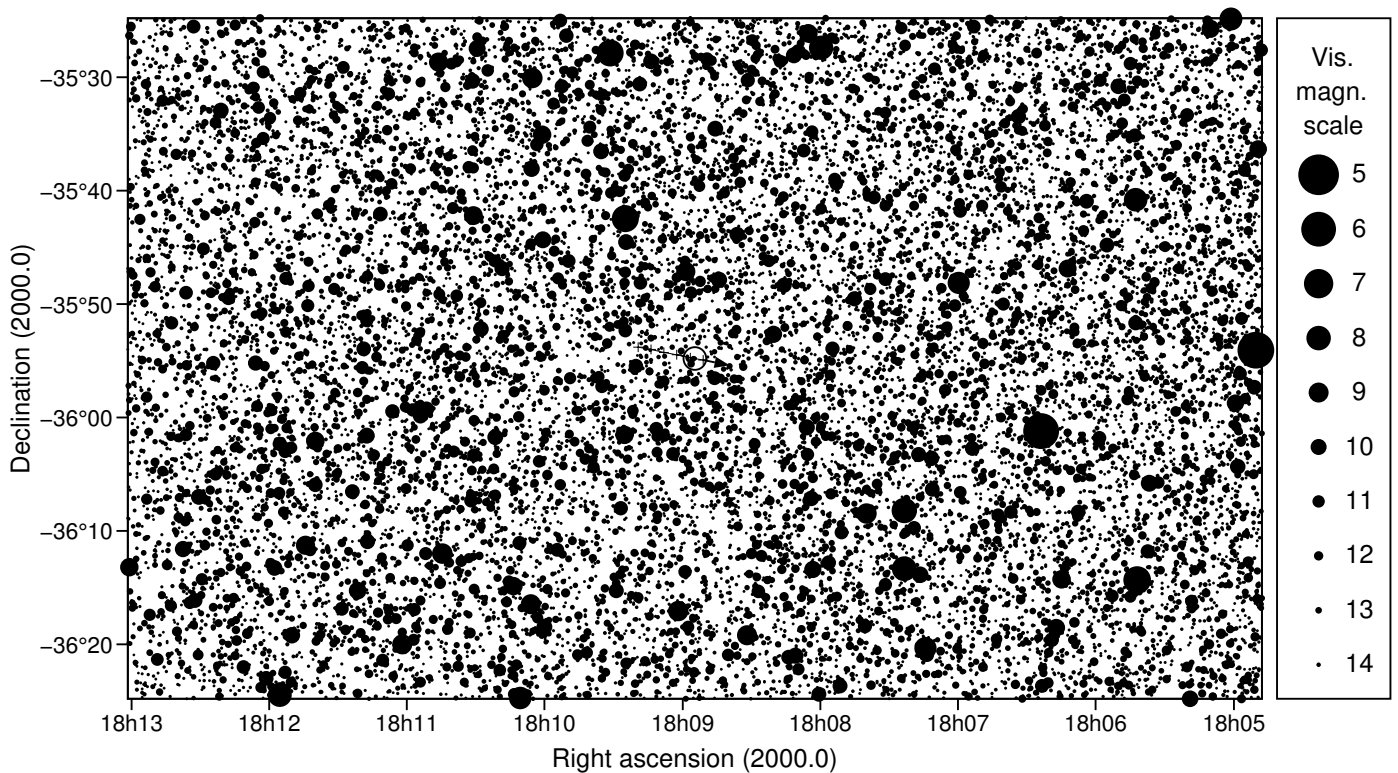
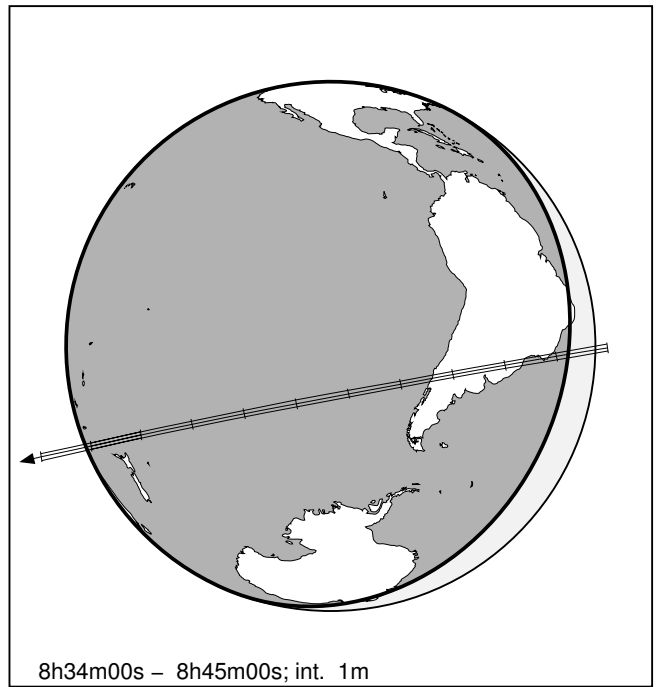
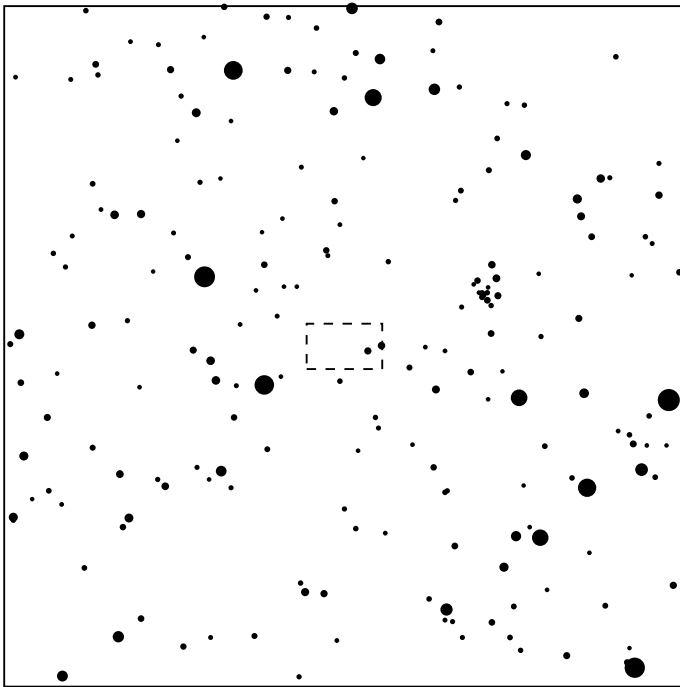


135571 2002GG32 & UCAC4 271-150893

2026 may 28 8^h39.2^m U.T.

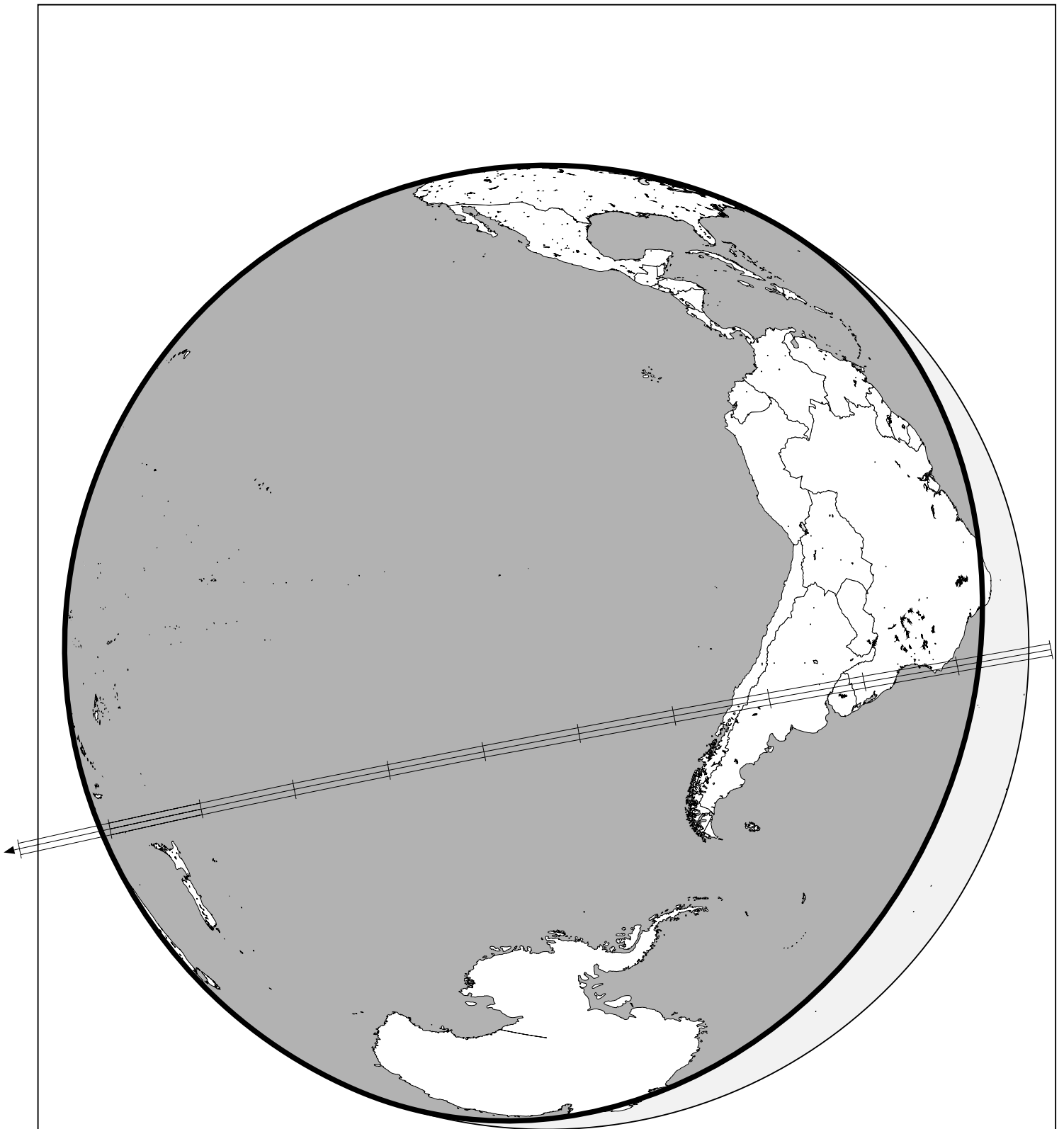
Planet: a = 54.96, e = 0.35
 V. mag. = 22.76 Diam. = 155.6 km = 0.01"
 μ = 2.99"/h π = 0.25" Ref. = MPO694047
 Δm = 8.7 Max. dur. = 7.4s

Star: Source cat. DR3
 α = 18^h08^m54.614^s δ = -35°54'47.51"
 Vmag = 14.09 Bmag = 16.84
 Sun : 152° Moon : 58° , 92%



135571 2002GG32 & UCAC4 271-150893

2026 may 28 8^h39.2^m U.T.



8h34m00s – 8h45m00s; int. 1m