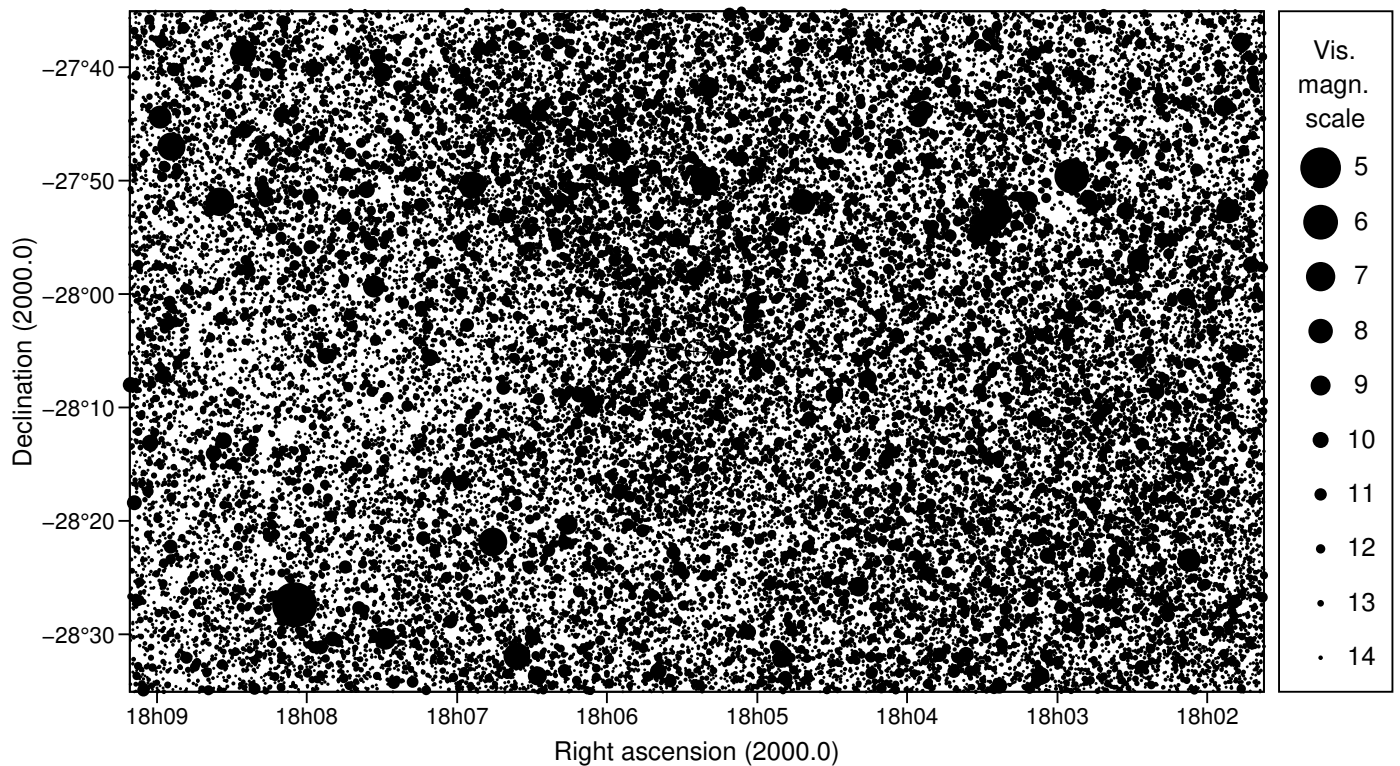
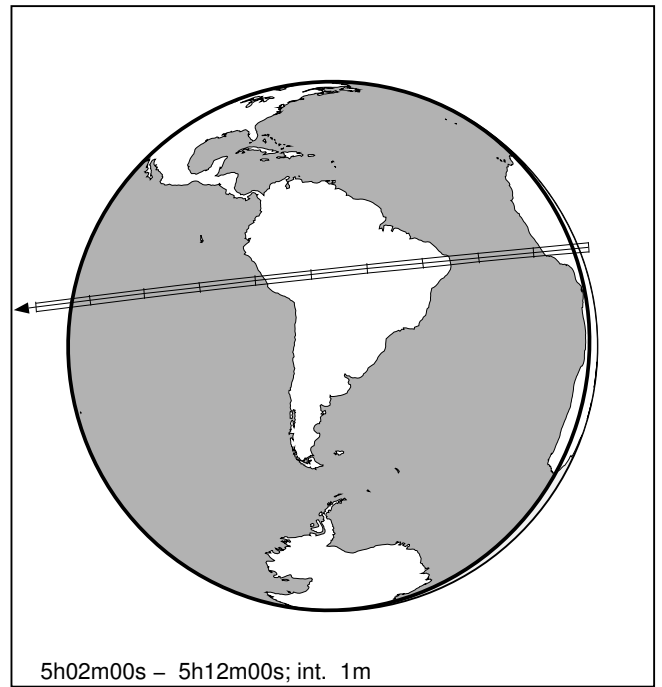
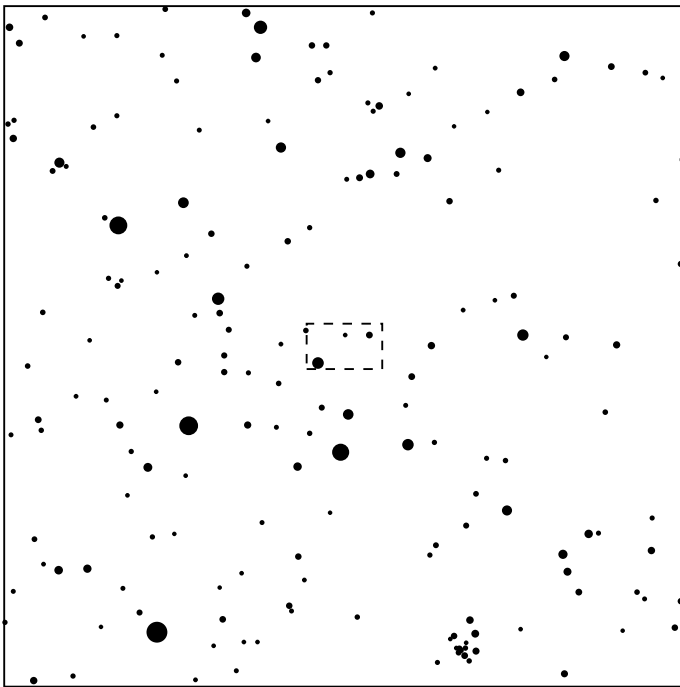


470593 2008LP17 & UCAC5 310-146958

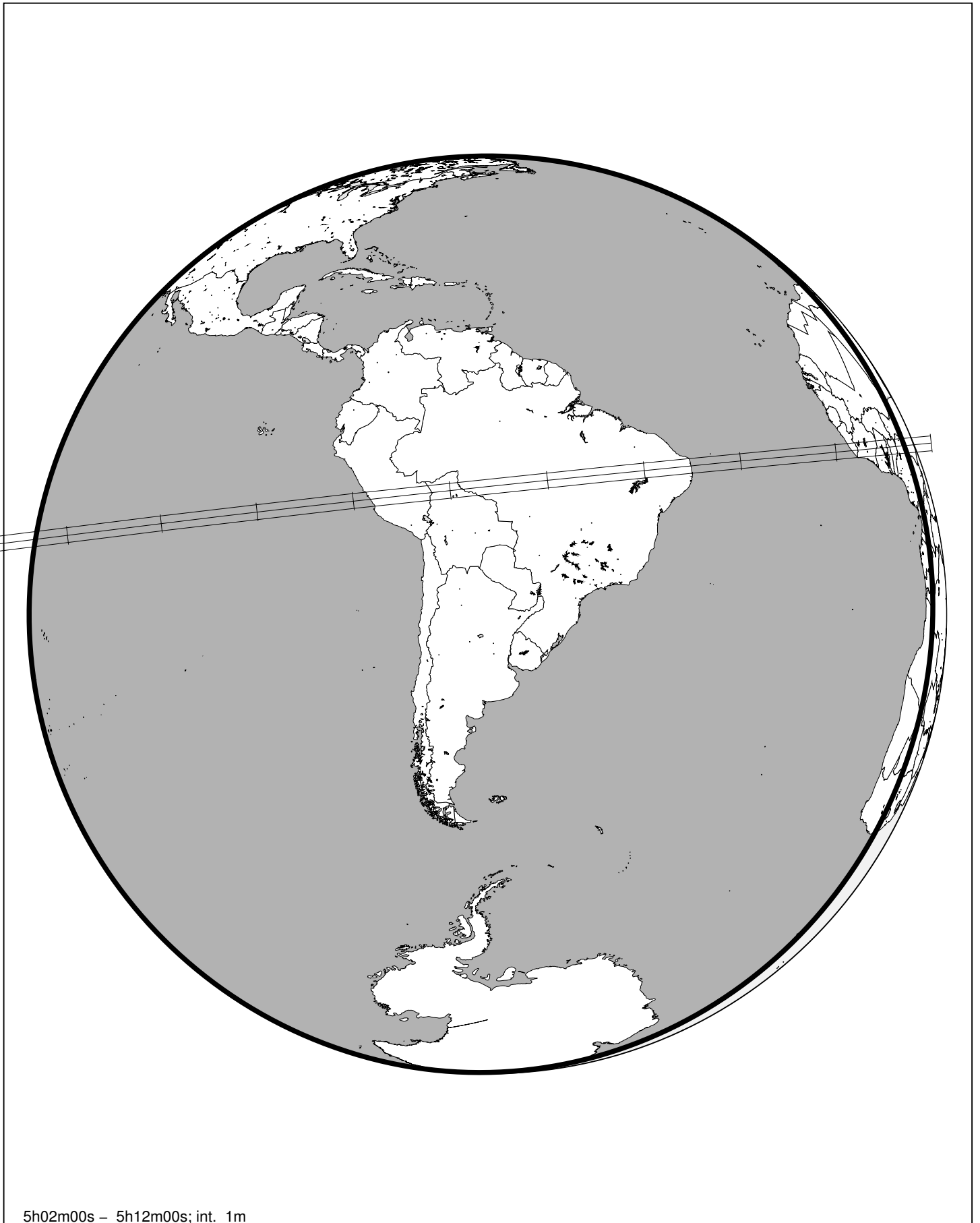
2026 jun 8 5^h 6.8^m U.T.

Planet:	$a = 88.06, e = 0.66$	Star:	Source cat. UCAC5
V. mag. = 21.62	Diam. = 206.1 km = 0.01"	$\alpha = 18^{\text{h}}05^{\text{m}}24.089^{\text{s}}$	$\delta = -28^{\circ}05'03.58''$
$\mu = 3.54''/\text{h}$	$\pi = 0.28''$ Ref. = MPO700369	Vmag = 14.83	Bmag = 13.70
$\Delta m = 6.8$	Max. dur. = 9.3s	Sun : 165°	Moon : 74° , 52%



470593 2008LP17 & UCAC5 310-146958

2026 jun 8 5^h 6.8^m U.T.



5h02m00s – 5h12m00s; int. 1m