

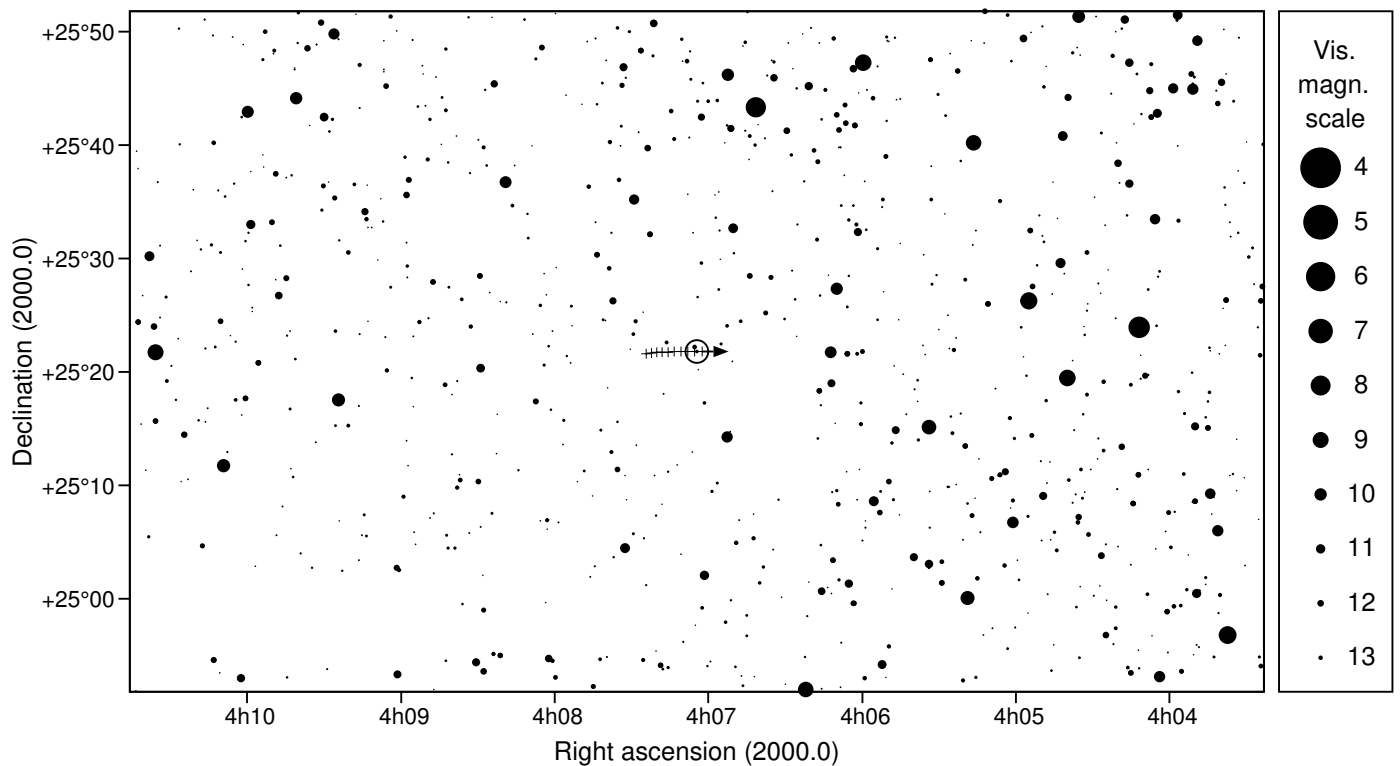
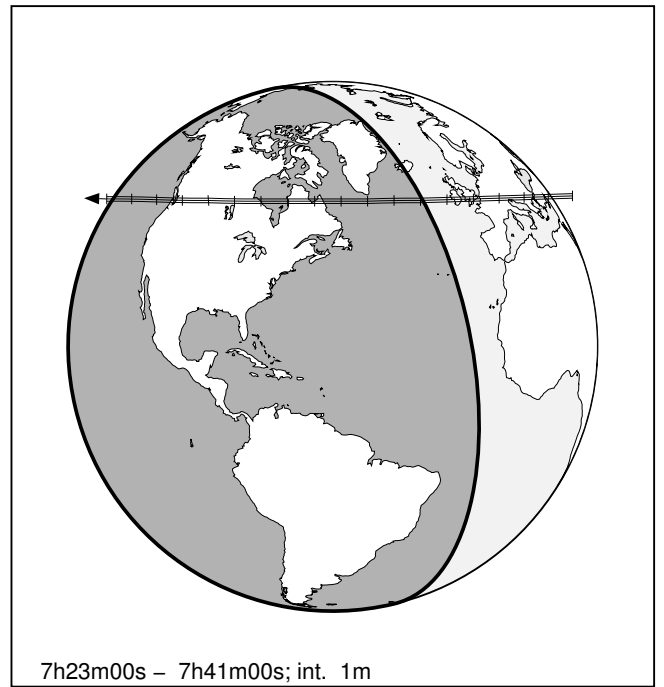
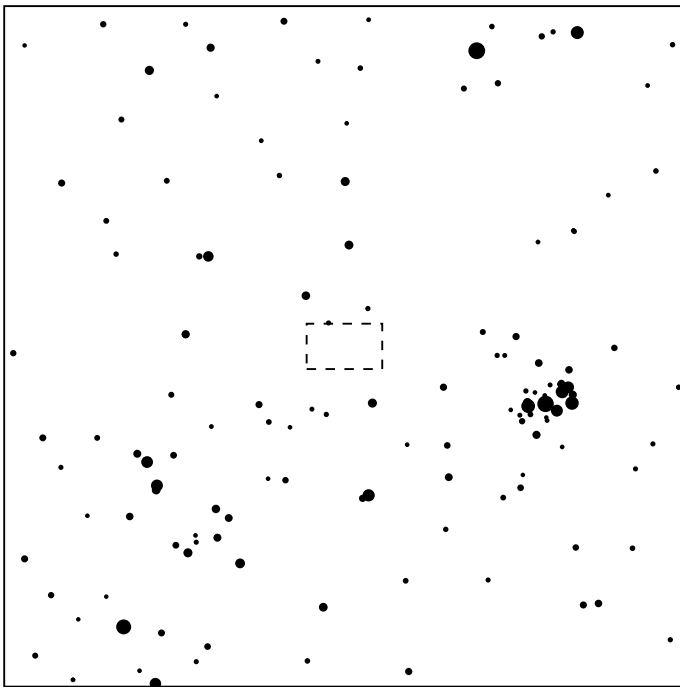
2011UV410 & UCAC4 577-010353

2026 sep 29 7^h32.3^m U.T.

Planet: a = 39.80, e = 0.26
 V. mag. = 23.20 Diam. = 109.6 km = 0.00"
 μ = 1.62"/h π = 0.27" Ref. = MPO339458

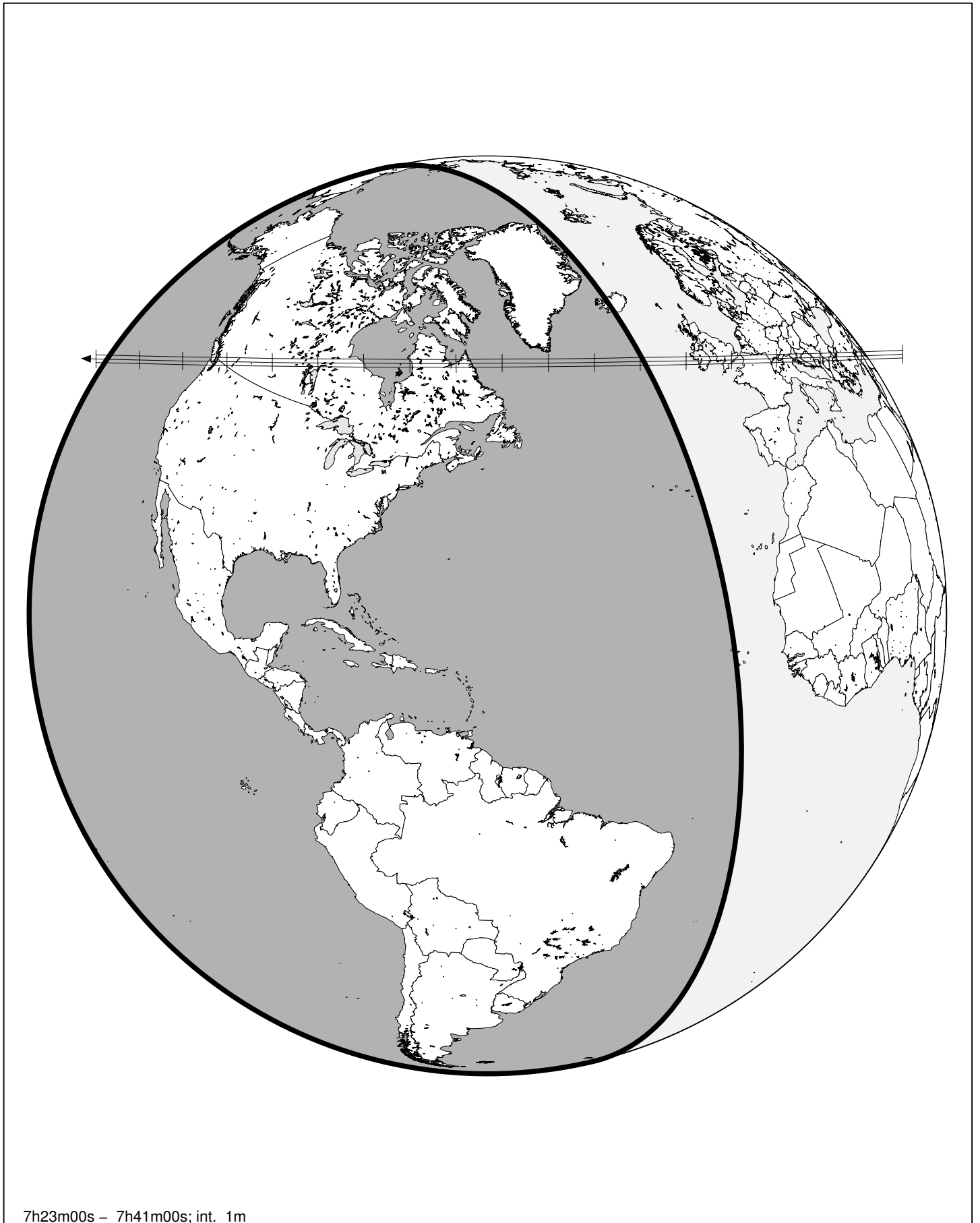
Star: Source cat. DR3
 α = 4^h07^m04.516^s δ = +25°21'48.23"
 Vmag = 13.47 Bmag = 14.16

Δm = 9.7 Max. dur. = 10.5s Sun : 121° Moon : 25° , 91%



2011UV410 & UCAC4 577-010353

2026 sep 29 7^h32.3^m U.T.



7h23m00s – 7h41m00s; int. 1m