

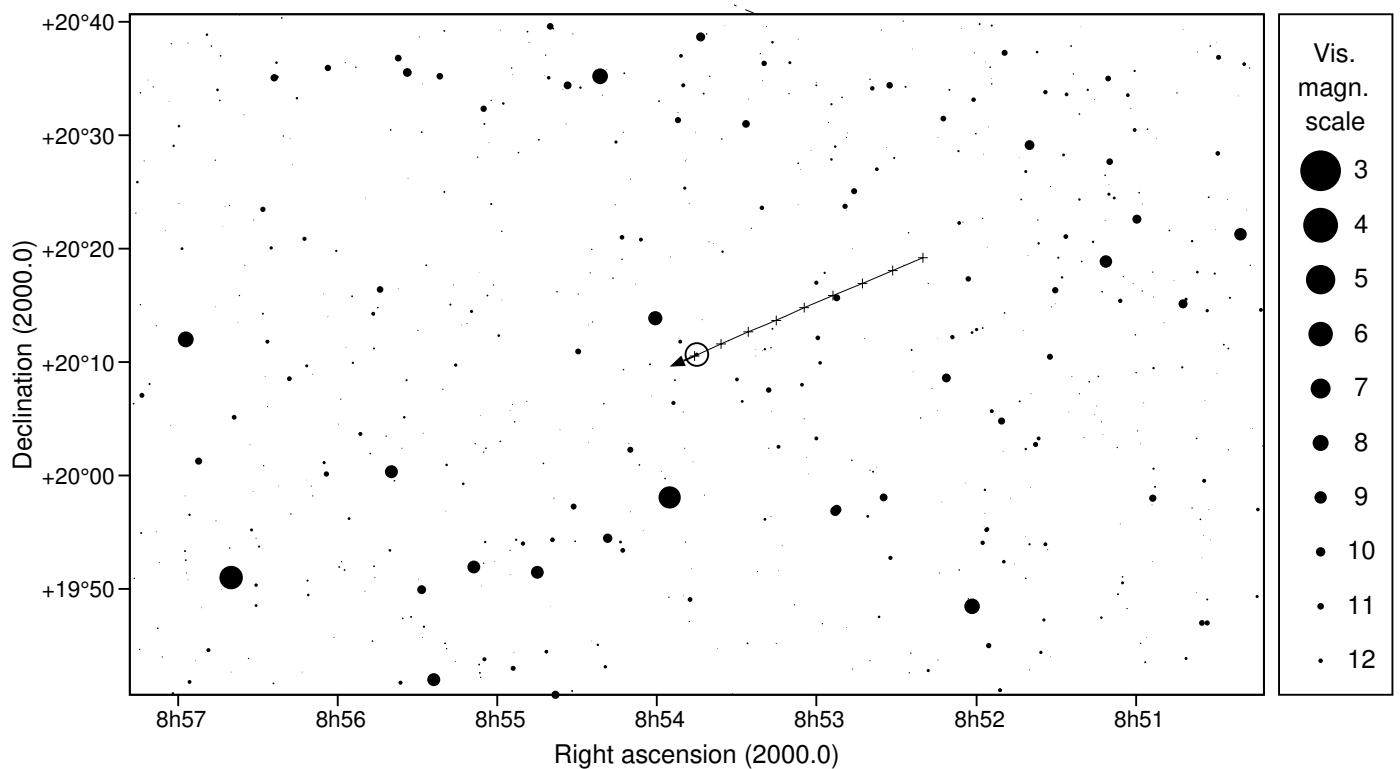
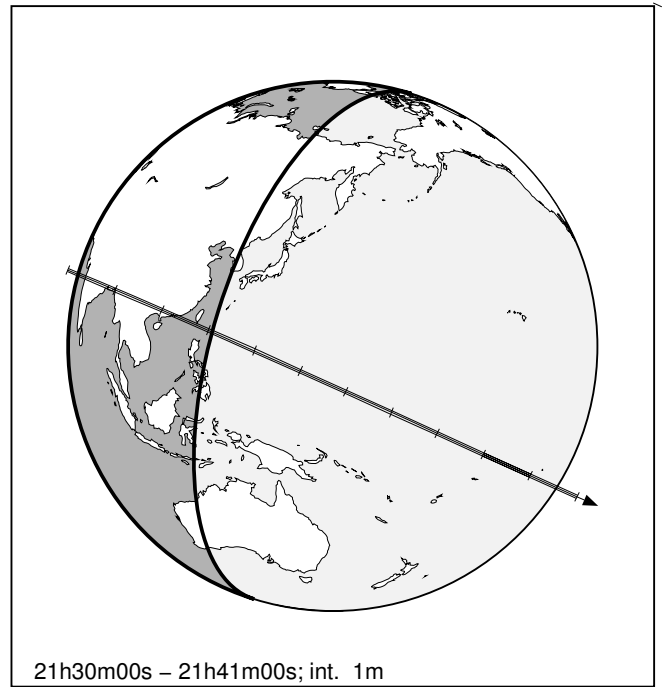
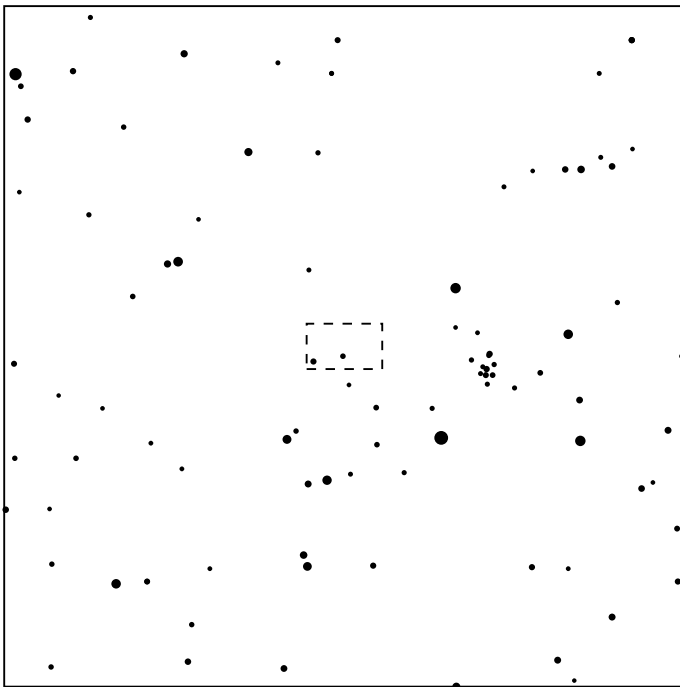
341275 2007RG283 & UCAC4 551-045597

2026 oct 6 21^h35.4^m U.T.

Planet: a = 20.03, e = 0.24
 V. mag. = 20.71 Diam. = 86.7 km = 0.01"
 μ = 6.37"/h π = 0.55" Ref. = E2024-CG3

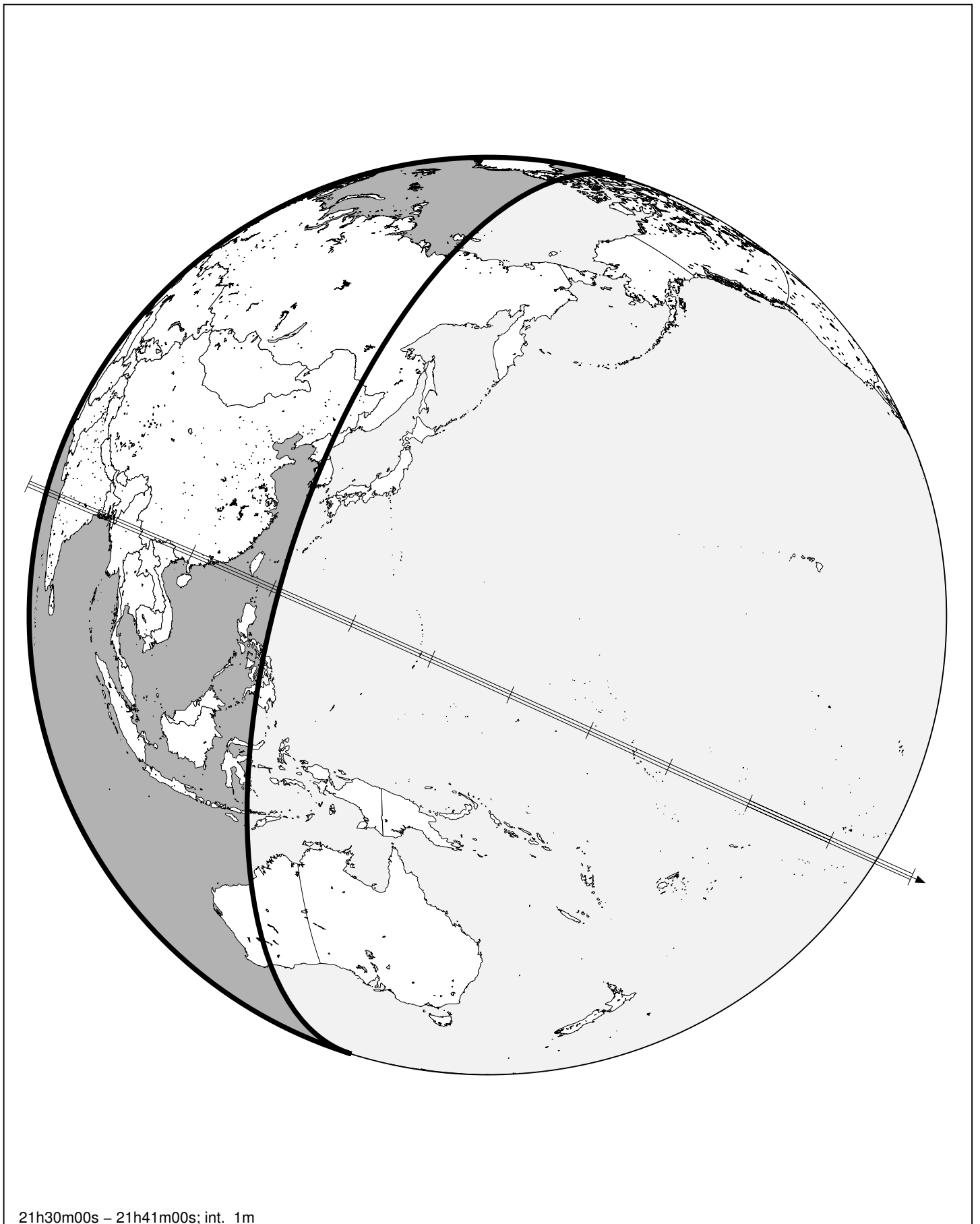
Star: Source cat. DR3
 α = 8^h53^m45.018^s δ = +20°10'38.84"
 Vmag = 12.69 Bmag = 12.94

Δm = 8.0 Max. dur. = 4.2s Sun : 63° Moon : 17° , 16%



341275 2007RG283 & UCAC4 551-045597

2026 oct 6 21^h35.4^m U.T.



21h30m00s – 21h41m00s; int. 1m