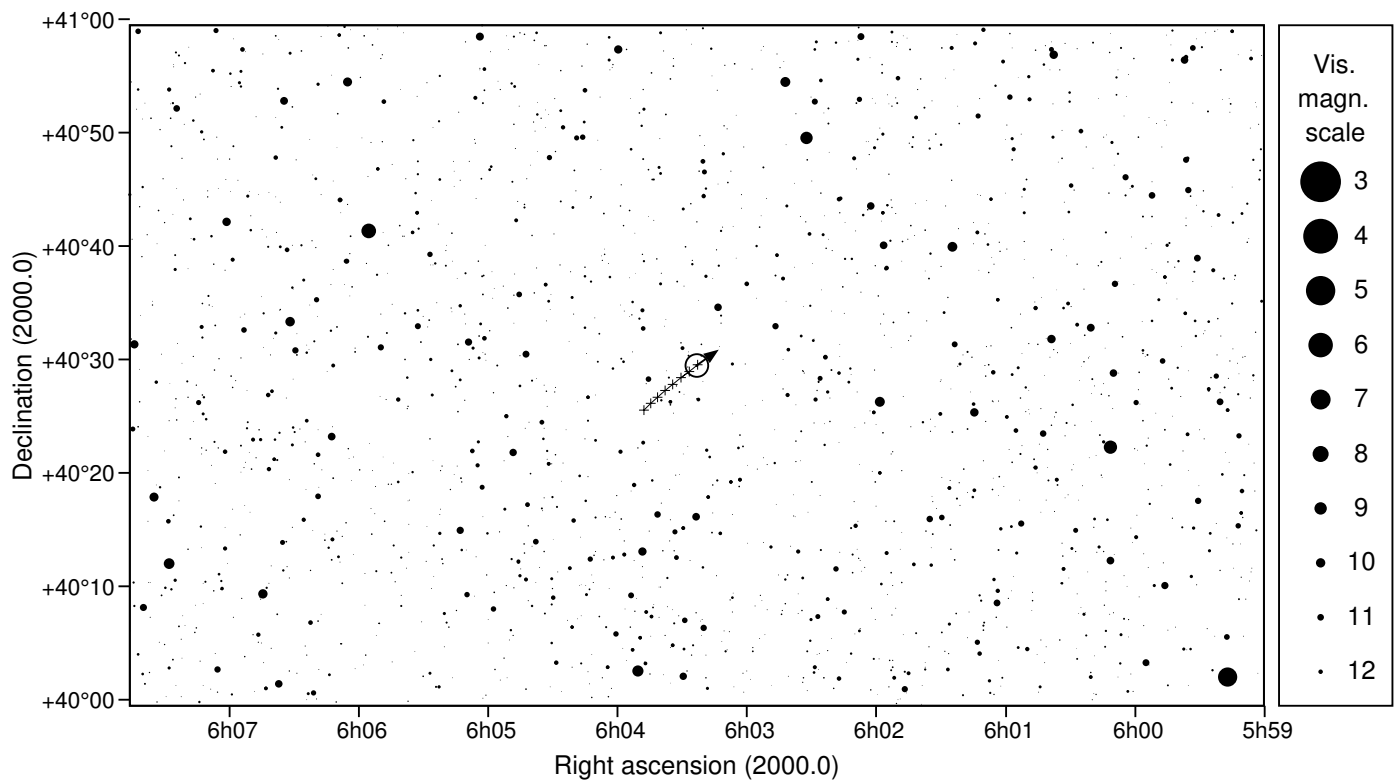
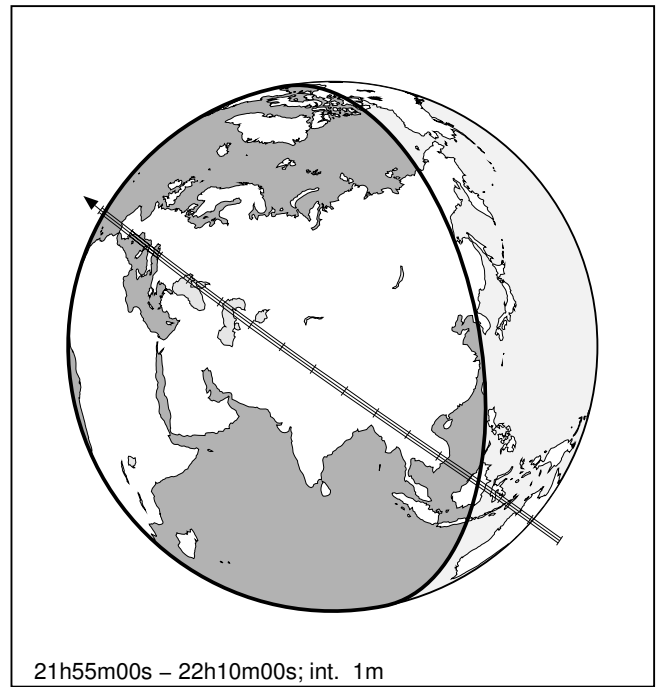
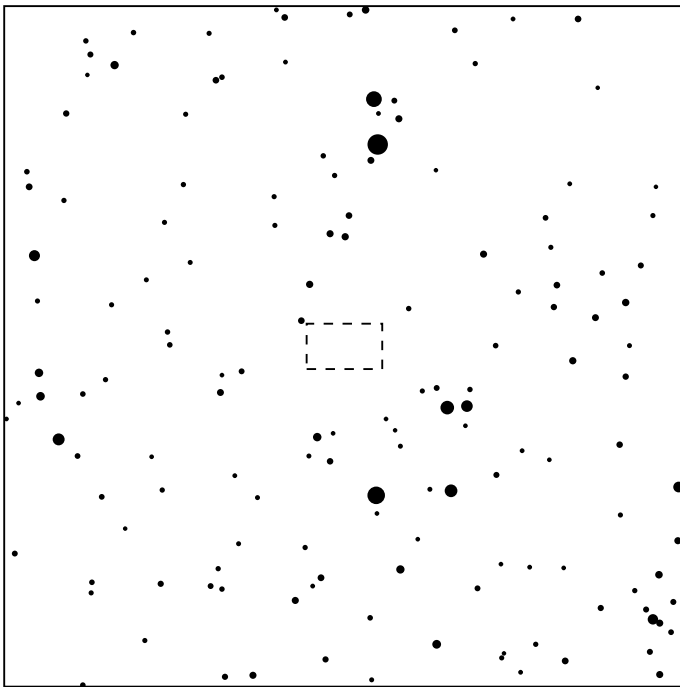


681280 2004VV130 & UCAC4 653-040179

2026 oct 29 22^h 2.9^m U.T.

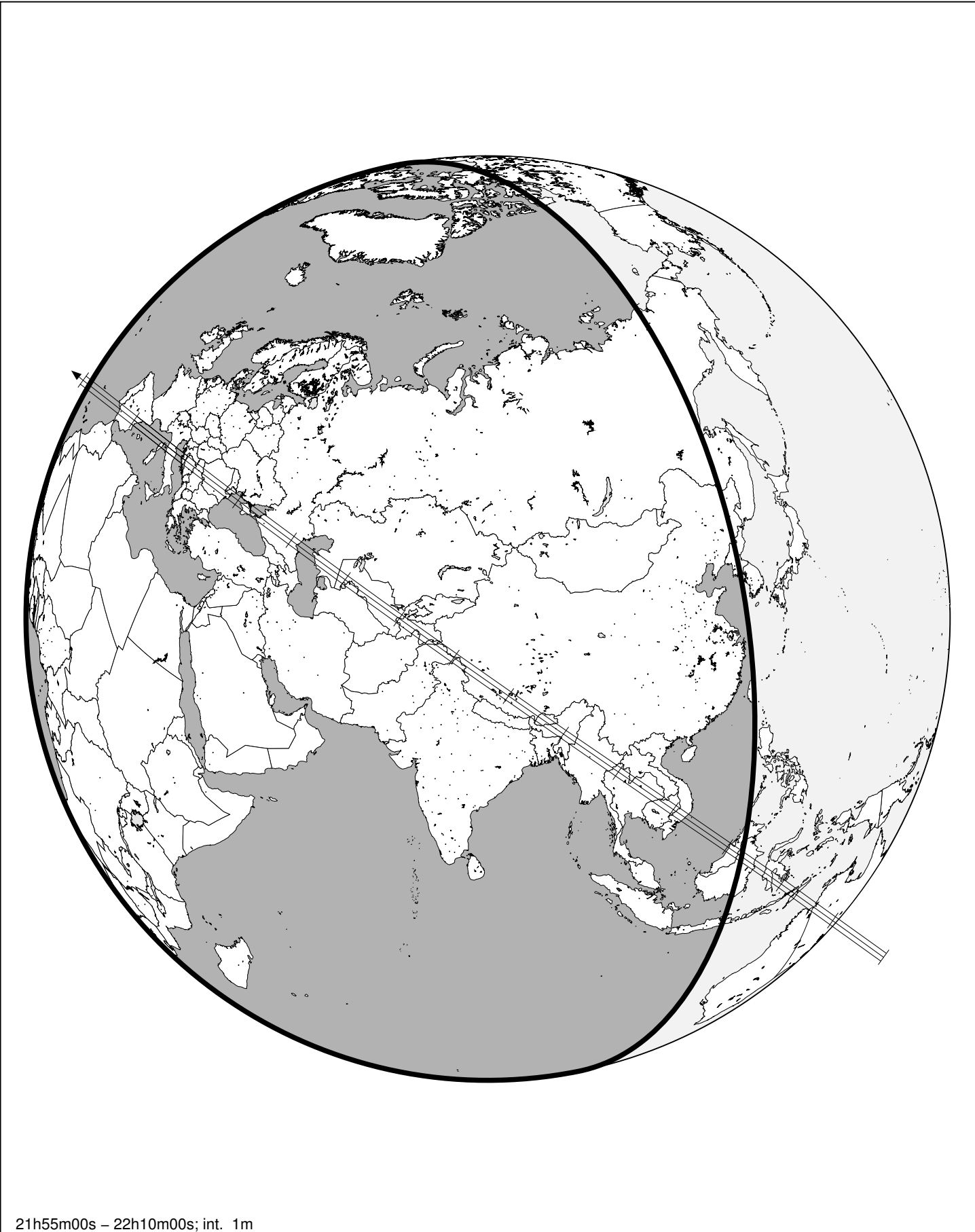
Planet: a = 39.77, e = 0.19
 V. mag. = 22.74 Diam. = 131.8 km = 0.01"
 μ = 2.36"/h π = 0.28" Ref. = MPO817914
 Δm = 9.8 Max. dur. = 8.7s

Star: Source cat. DR3
 α = 6^h03^m23.240^s δ = +40°29'27.34"
 Vmag = 12.90 Bmag = 13.20
 Sun : 123° Moon : 13° , 81%



681280 2004VV130 & UCAC4 653-040179

2026 oct 29 22^h 2.9^m U.T.



21h55m00s – 22h10m00s; int. 1m